

Noise Abatement Subcommittee Review of Noise Complaint Activity

October 28, 2015

Madison, Wisconsin



AIRCRAFT MOVEMENTS

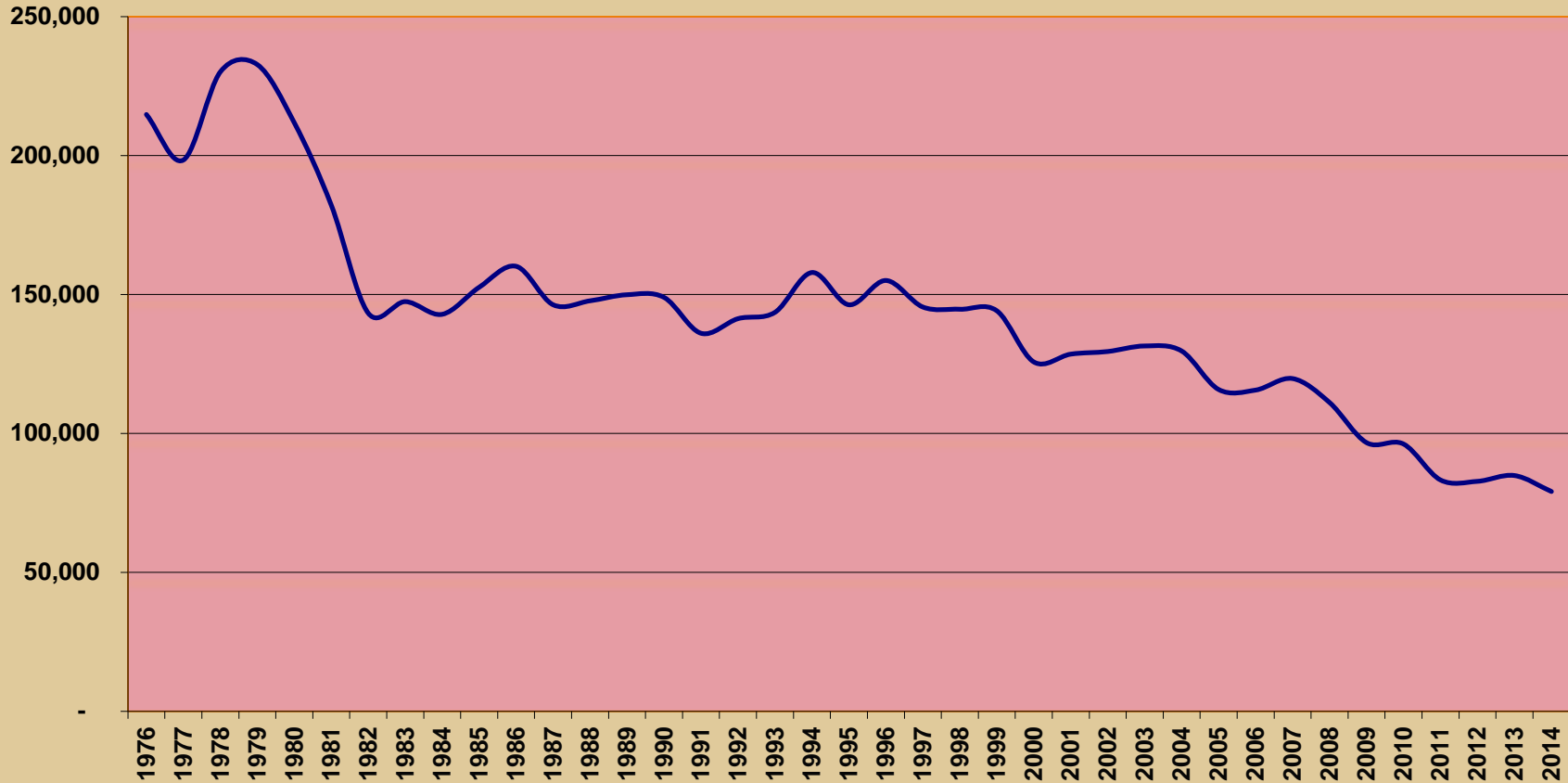
APR 15 – SEP 15

2

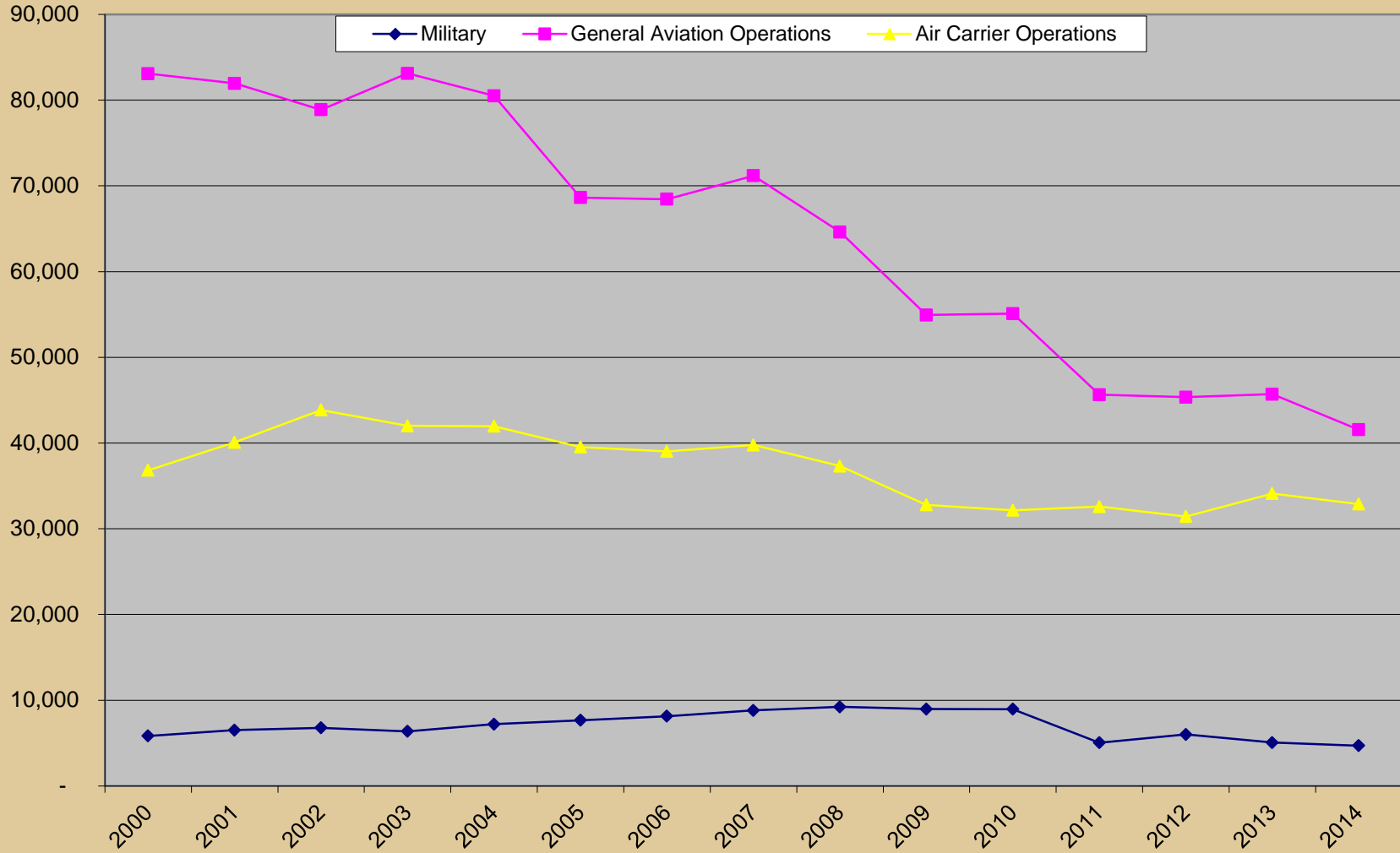
Aircraft Movements	APR 15 – SEP 15	APR 14 – SEP14	% Change
<i>Air Carrier</i>	14,960	16,573	-9.7%
<i>Military</i>	2,355	2,325	+1.0%
<i>General Aviation</i>	23,940	23,614	+1.0%
<i>Total Movements</i>	41,255	42,512	-3.0%



DCRA HISTORICAL AIRCRAFT OPERATIONS

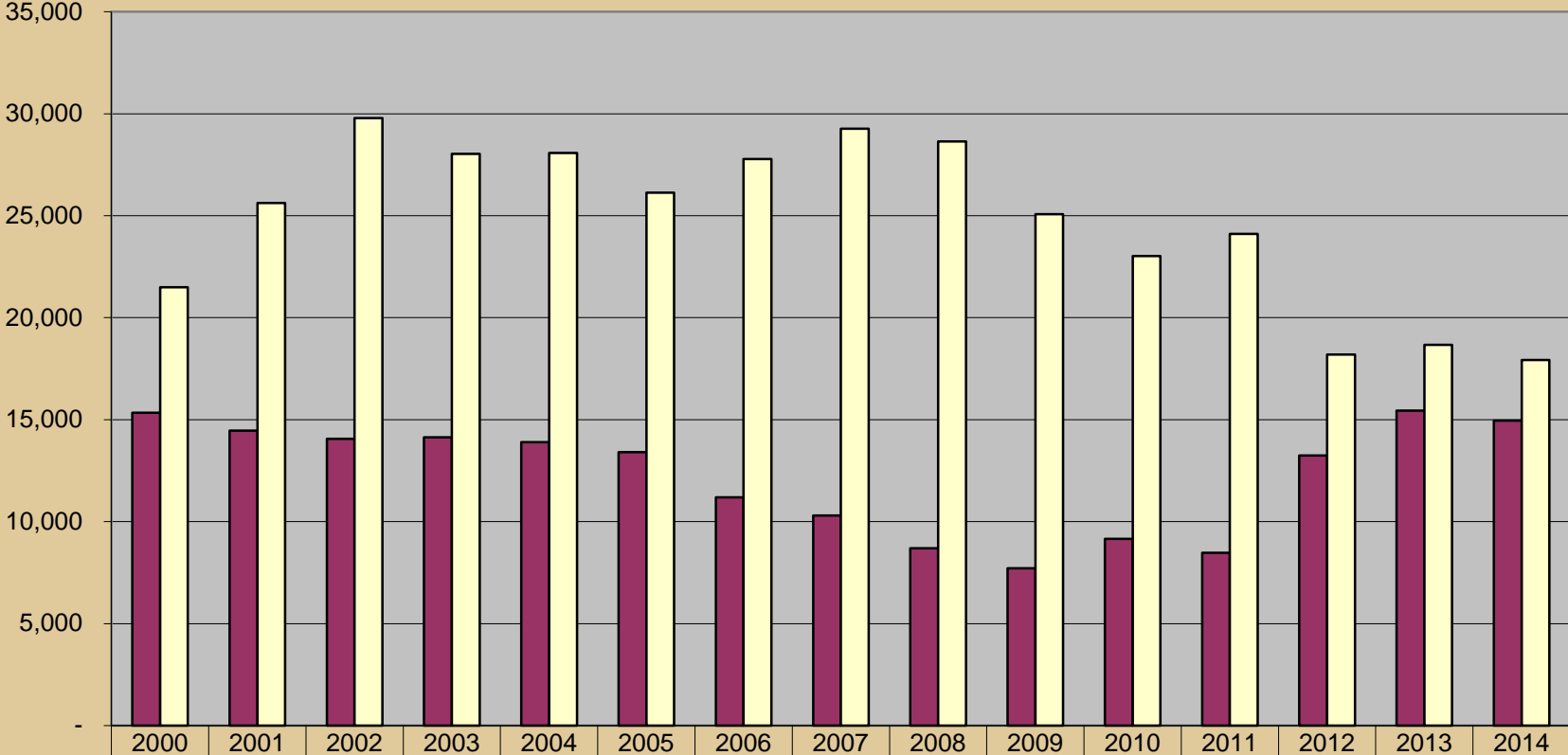


DCRA HISTORICAL OPERATIONS BY AIRCRAFT TYPE



AIR CARRIER (60+) vs AIR TAXI (59)

■ Air Carrier □ Air Taxi

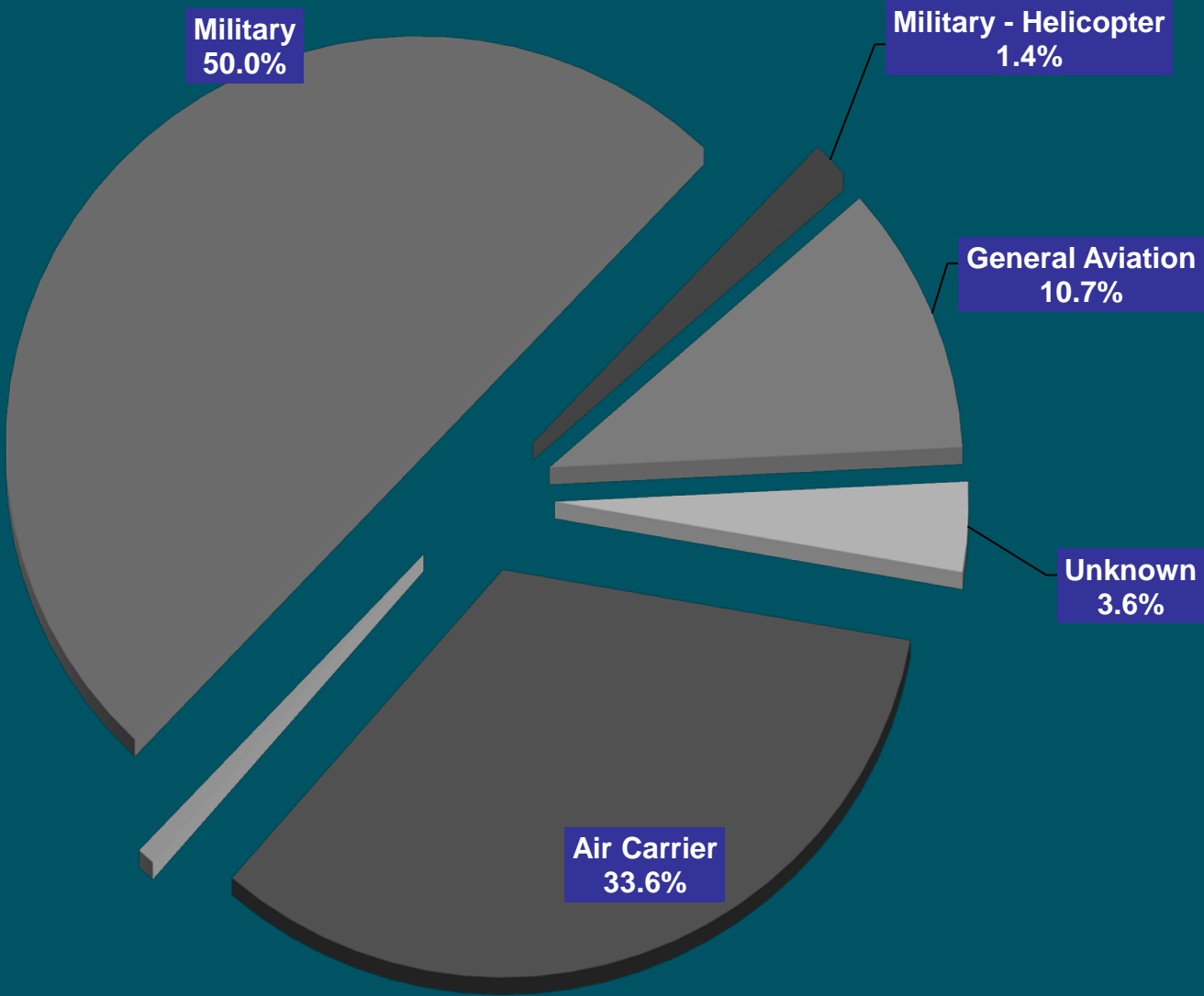


■ Air Carrier	15,332	14,458	14,066	14,130	13,895	13,401	11,190	10,303	8,690	7,710	9,150	8,476	13,239	15,439	14,948
□ Air Taxi	21,497	25,628	29,784	28,032	28,072	26,127	27,784	29,274	28,637	25,080	23,022	24,111	18,193	18,667	17,929



COMPLAINTS BY AIRCRAFT TYPE

APR 15- SEP 15



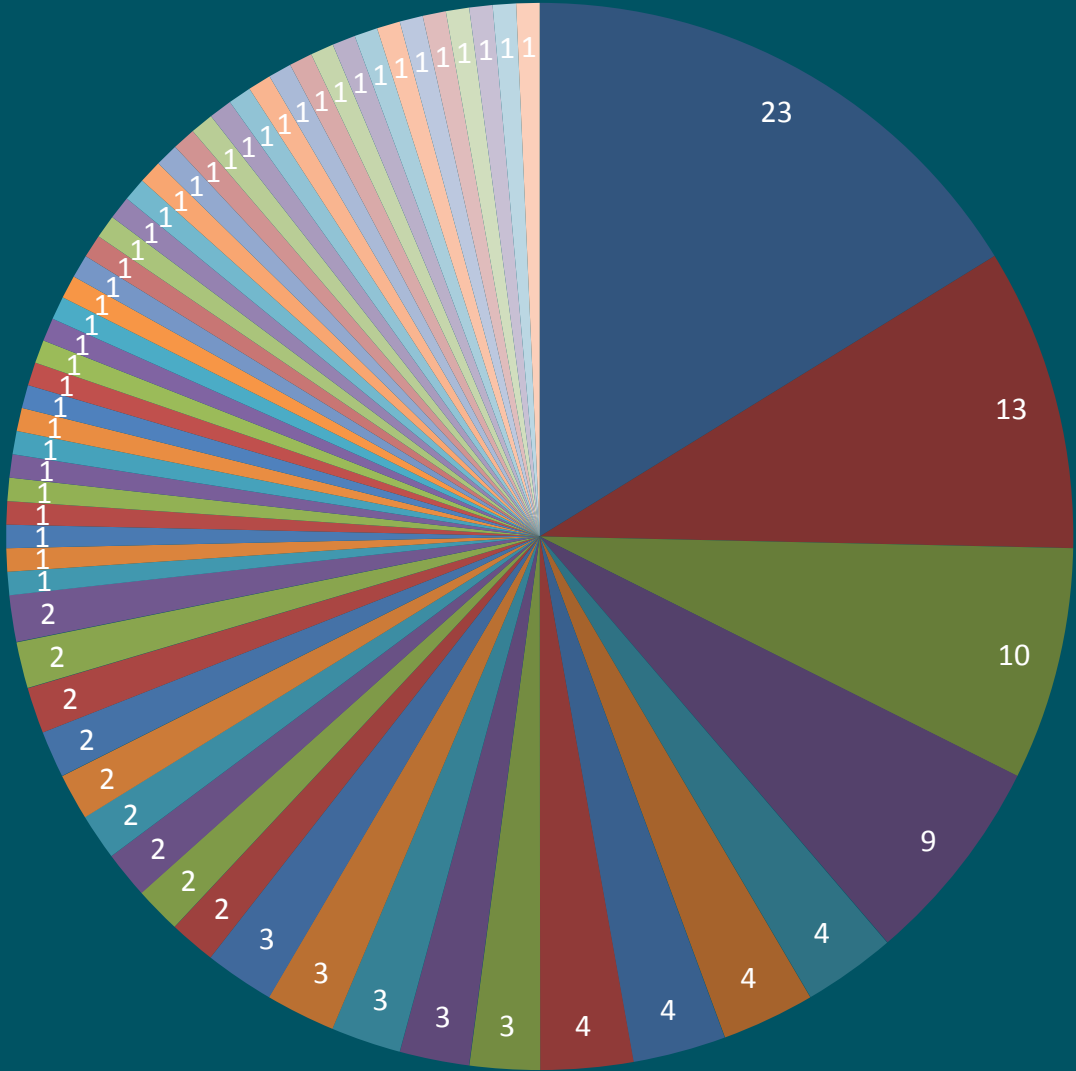
COMPLAINTS BY AREA

Area	APR 15 – SEP 15		APR 14 - SEP 14	
	Complaints	Callers	Complaints	Callers
<i>Blooming Grove</i>	0	0	0	0
<i>Burke</i>	0	0	0	0
<i>Cottage Grove</i>	0	0	0	0
<i>DeForest</i>	23	1	74	1
<i>Fitchburg</i>	0	0	0	0
<i>Madison</i>	107	57	45	28
<i>McFarland</i>	0	0	0	0
<i>Middleton</i>	0	0	0	0
<i>Monona</i>	1	1	0	0
<i>Stoughton</i>	0	0	0	0
<i>Windsor</i>	0	0	0	0
<i>Verona</i>	0	0	0	0
<i>Waunakee</i>	1	1	4	1
Total	132	60	123	30



Calls per Household

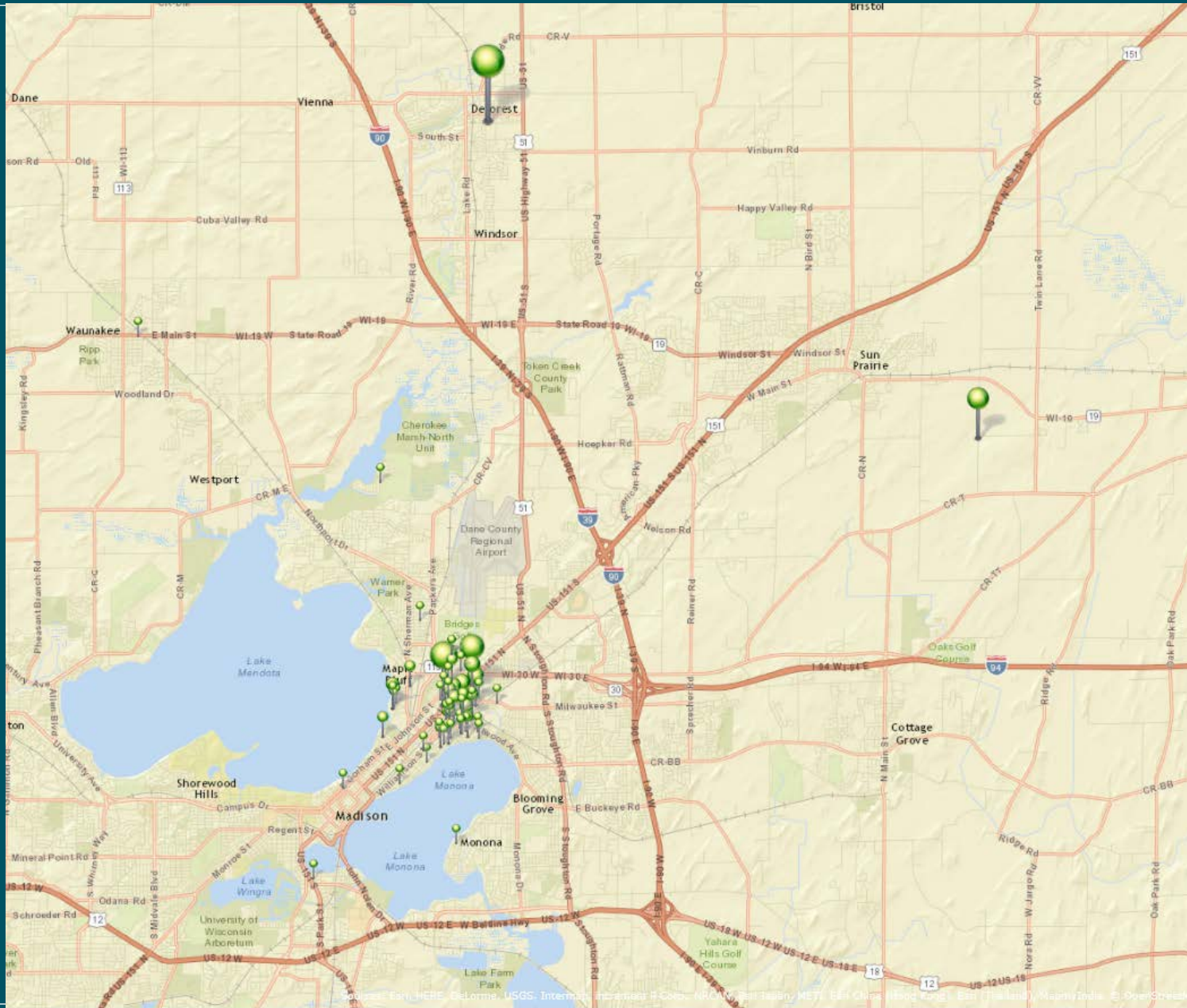
APR 15-SEP 15



COMPLAINT LOCATIONS

APR 15 – SEP 15

10



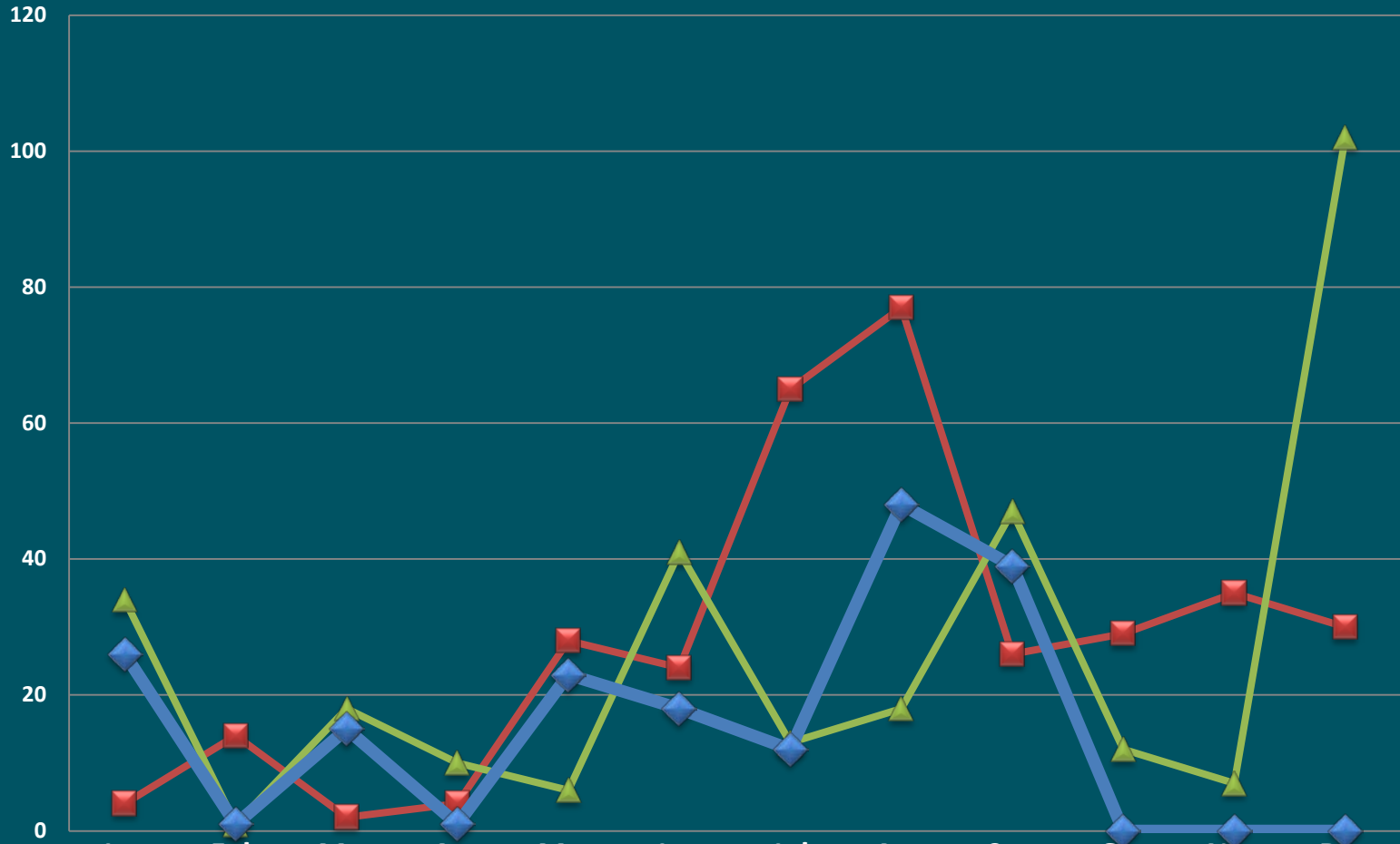
NOISE COMPLAINT CALLS

APR 15 – SEP 15

	APR	MAY	JUN	JUL	AUG	SEP	TOTAL
DAY	1	21	14	12	45	34	127
NIGHT	0	2	4	0	3	5	14
TOTAL	1	23	18	12	48	39	141



2013 - 2015 Noise Complaint History



	Jan	Feb	Mar	Apr	May	Jun	Jul	Aug	Sep	Oct	Nov	Dec
2013	4	14	2	4	28	24	65	77	26	29	35	30
2014	34	1	18	10	6	41	13	18	47	12	7	102
2015	26	1	15	1	23	18	12	48	39	0	0	0



COMPLAINT HISTORY

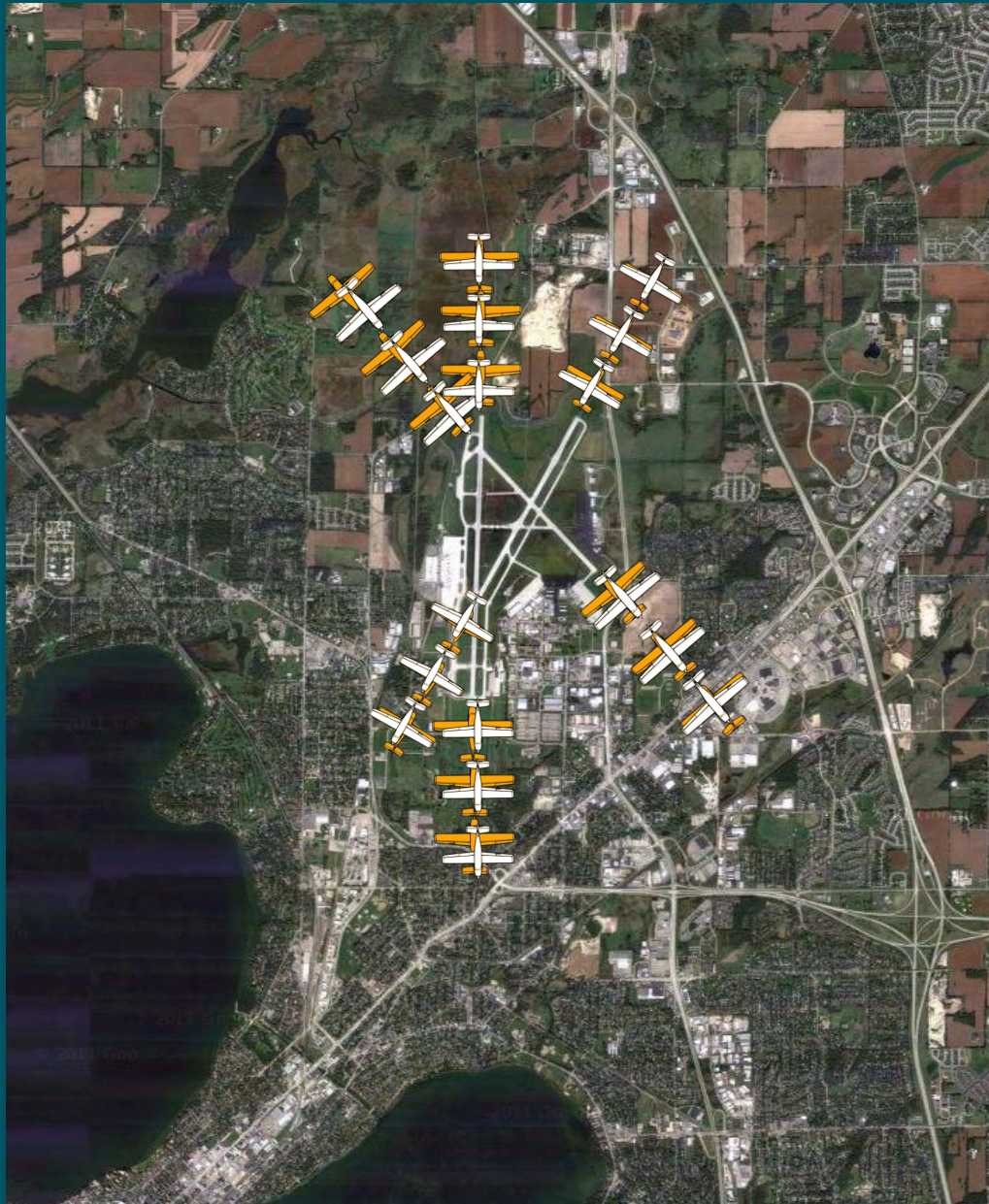
APR 15 – SEP 15

	1	2	3	4	5	6	7	8	9	10	11	12	13	14	15	16	17	18	19	20	21	22	23	24	25	26	27	28	29	30	31
A P R											H																				
M A Y					M		M	MM MM M	M M M M	M M			H		M M M			M M		G A											
J U N			M M	A M M		G		A	A M			A			M M	M M	A M						G							A A	
J U L	U G G C A		U U							M M			A												G						
A U G				G					A A A A A											M M M M M	M			M			A A A A A	G		A A A A A A A A A A U G	G A
S E P		U							M	A	U	M G	MM MM MM MM MM MM MM M A	A M M	G G		A A				M	G A	M			A A A	A A				

A = Airline; G = General Aviation; H = Military Helicopter; M = Military Fixed Wing; U = Unknown



WIND CONDITIONS SUMMARY



- WINDS FROM THE SOUTH
THAT ARE GREATER THAN THE KNOTS
- VISIBILITY GREATER THAN 3 MILES
- RUNWAY CONDITION IS DRY
- PILOT COMPLIES WITH VOLUNTARY CONTRA FLOW OPERATION

Wisconsin Wind Data*

*National Weather Service

15

Month	Prevailing Wind	Greater than 5 kts
Jan	WNW – 11.5	94.0%
Feb	WNW – 12	93.4%
Mar	NW – 13	93.9%
Apr	S – 11.4	93.6%
May	S – 10.4	93.0%
Jun	S – 9.7	91.6%
Jul	S – 9.2	90.1%
Aug	S – 9.1	88.9%
Sep	S – 9.8	90.1%
Oct	S – 10.4	92.2%
Nov	S – 10.7	94.3%
Dec	WNW – 12.4	94.0%
Annual	S – 12.4	92.4%



NOISE ABATEMENT COMPLIANCE AUDIT

WEATHER / RUNWAY DATA	
WINDS AT 5 KNOTS OR HIGHER ¹	80.29%
VISIBILITY AT 5 STATUTE MILES OR LESS	4.71%
RUNWAYS CLOSED ²	18/36 = 1398:07 3/21 = 60:54 14/32 = 88:57

¹ – Based on METAR weather observations at the time of recorded aircraft operations.
² – Runway closures primarily due to snow and ice control procedures



NOISE ABATEMENT COMPLIANCE AUDIT

RUNWAY USE

Aircraft observed departing to the North	41.88%
Aircraft observed arriving from the North	54.45%
Aircraft observed departing to the South	58.12%
Aircraft observed arriving from the South	45.55%

PASSUR FLIGHT TRACKING

16,802 operations recorded by Passur flight monitoring system

2,117 Passur observations of departures to the north and arrivals from the north when conditions allow for implementation of Noise Abatement Procedures



NOISE ABATEMENT COMPLIANCE AUDIT

**** With 100% compliance of Noise Abatement Procedures, there are times aircraft are required depart to the south and arrive from the south. ****

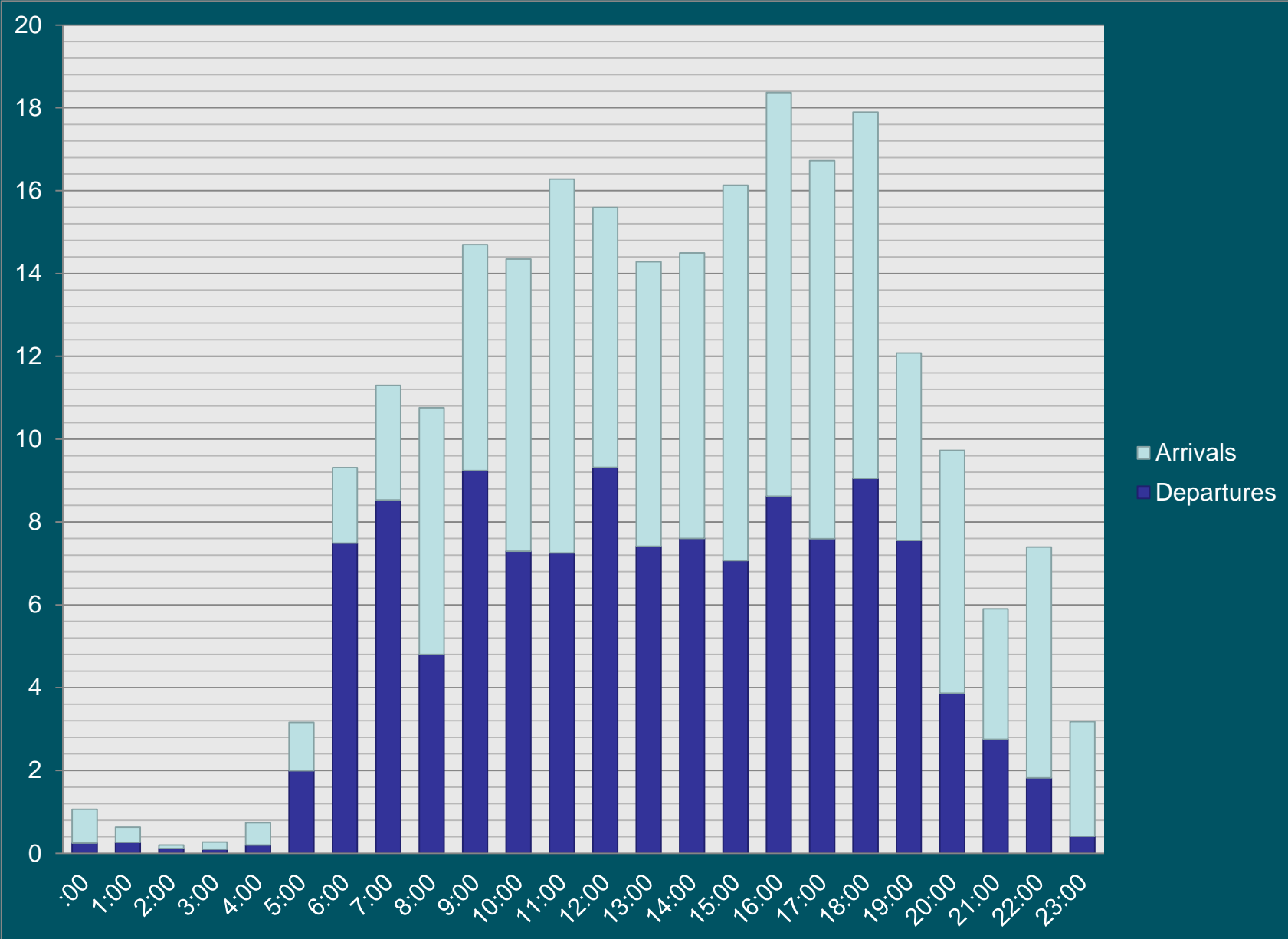
RUNWAY USE FACTORS			
	Wind	Visibility	Ceiling
South Departure	66.87%	4.77%	0.00%
South Arrival	67.38%	4.71%	16.22%

**** Safety, traffic, airline requirements, and weather are all components which are factored into a pilot's decision when landing and taking off. ****



AVERAGE HOURLY OPERATIONS

APR 15 – SEP 15



CONTACT INFORMATION

20

24 Hour Aircraft Noise Line: **246-5841**

Online Form: <http://www.msnaairport.com/community/noise.aspx>

Madison Automated Weather: **249-0615**



Questions?

