

# Noise Abatement Subcommittee Review of Noise Complaint Activity

Madison, Wisconsin

MAY 9, 2016



# AIRCRAFT MOVEMENTS

OCT 15 – MAR 16

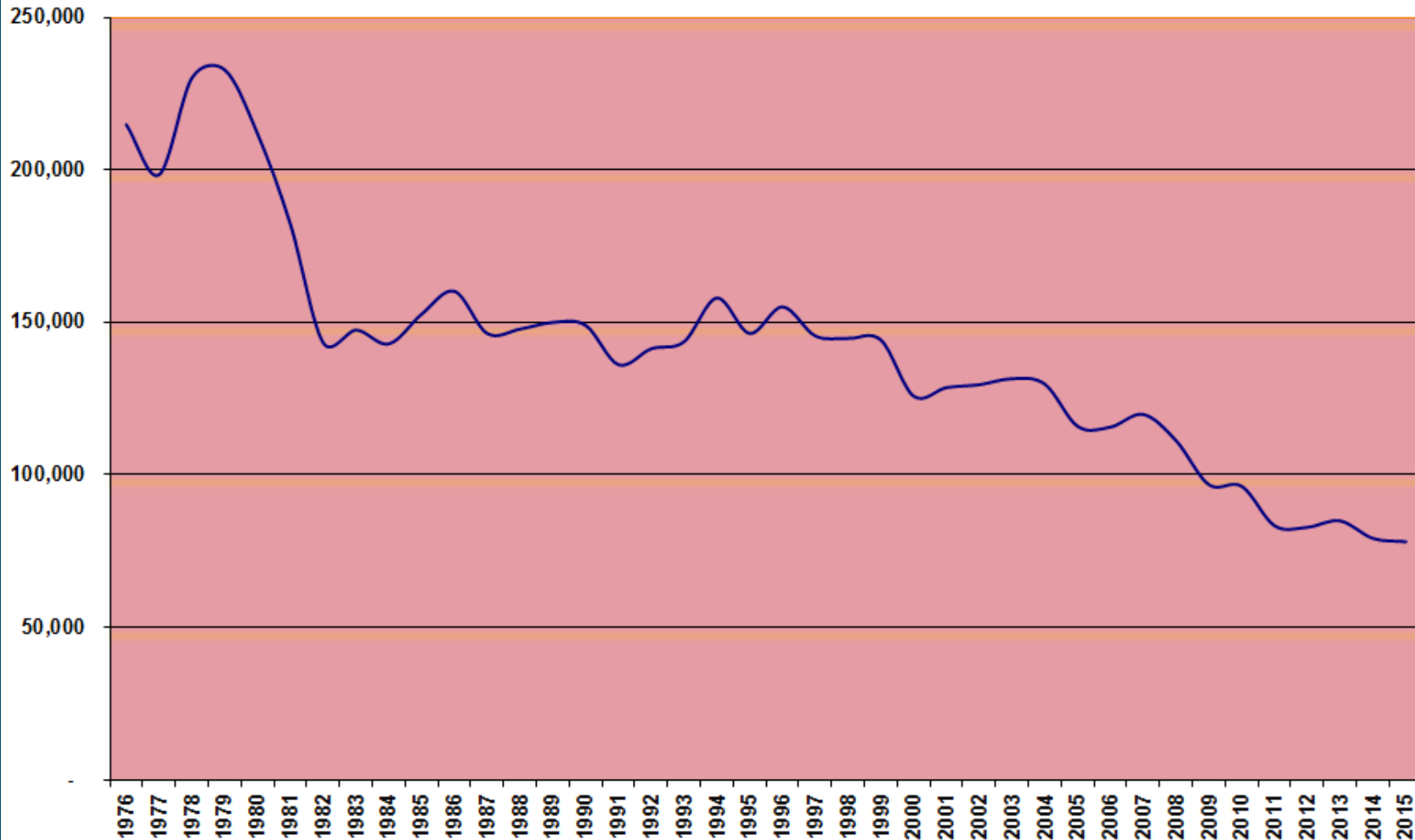
2

<b>Aircraft Movements</b>	<b>OCT 15 – MAR 16</b>	<b>OCT 14 – MAR 15</b>	<b>% Change</b>
<i><b>Air Carrier</b></i>	<b>14,176</b>	<b>15,807</b>	<b>-10%</b>
<i><b>Military</b></i>	<b>2,711</b>	<b>2,163</b>	<b>25%</b>
<i><b>General Aviation</b></i>	<b>21,332</b>	<b>18,442</b>	<b>15%</b>
<i><b>Total Movements</b></i>	<b>38,216</b>	<b>36,412</b>	<b>5%</b>

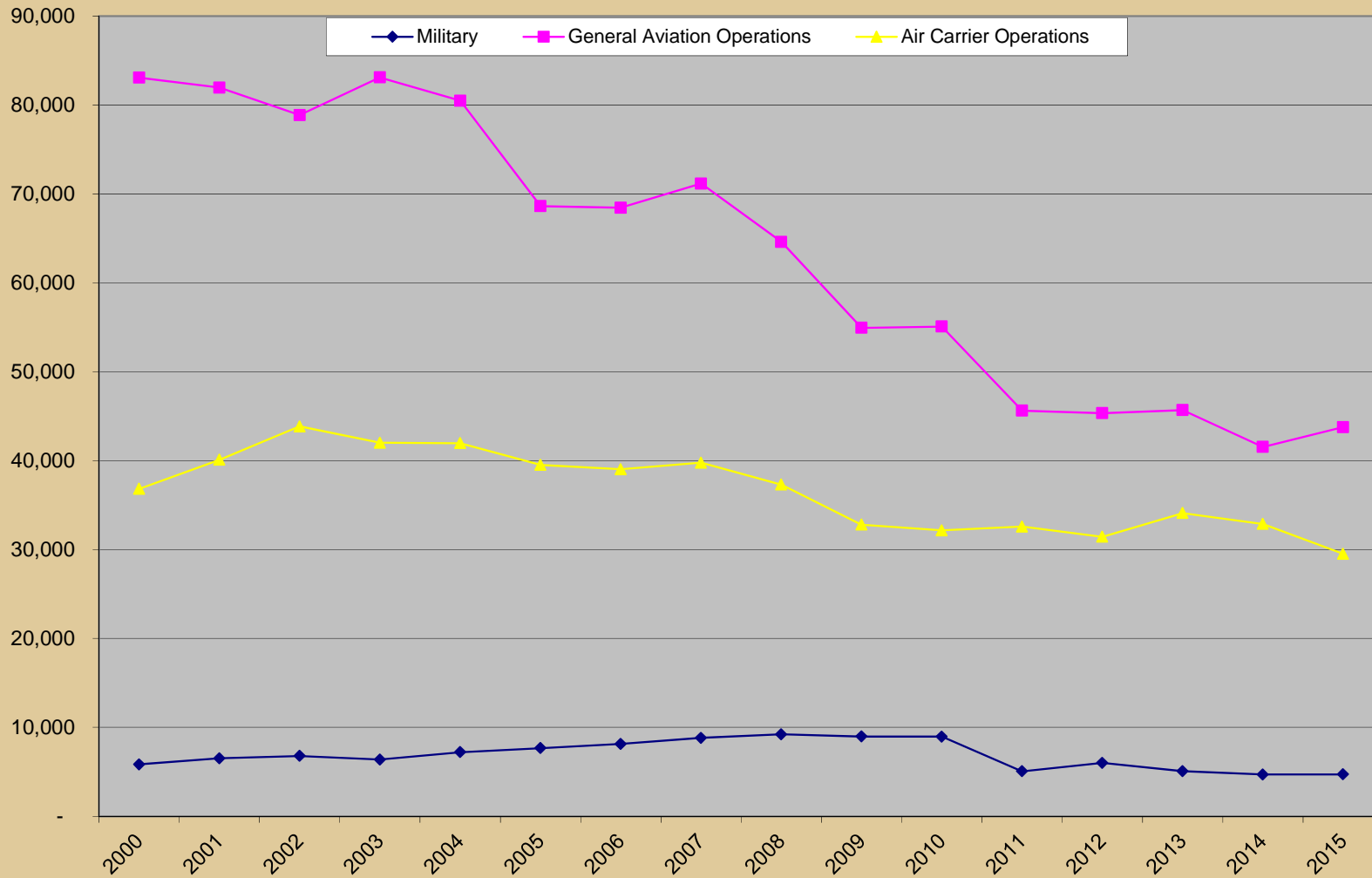


# Aircraft Operations

Historical Total Aircraft Operations, DCRA

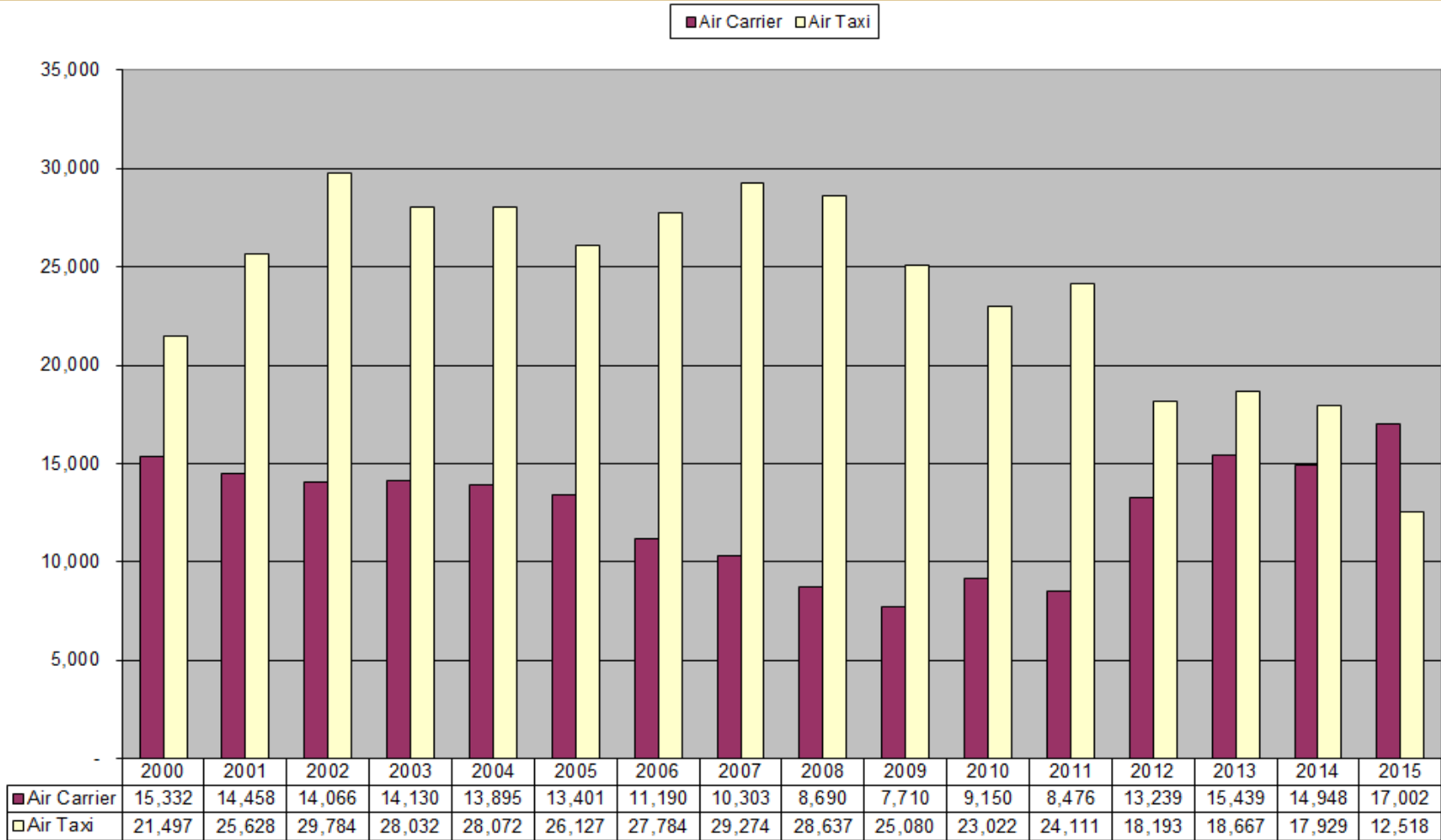


# Historical Aircraft Operations by Type



# Air Carrier (A-320, B717) vs Air Taxi (CRJ, ERJ)

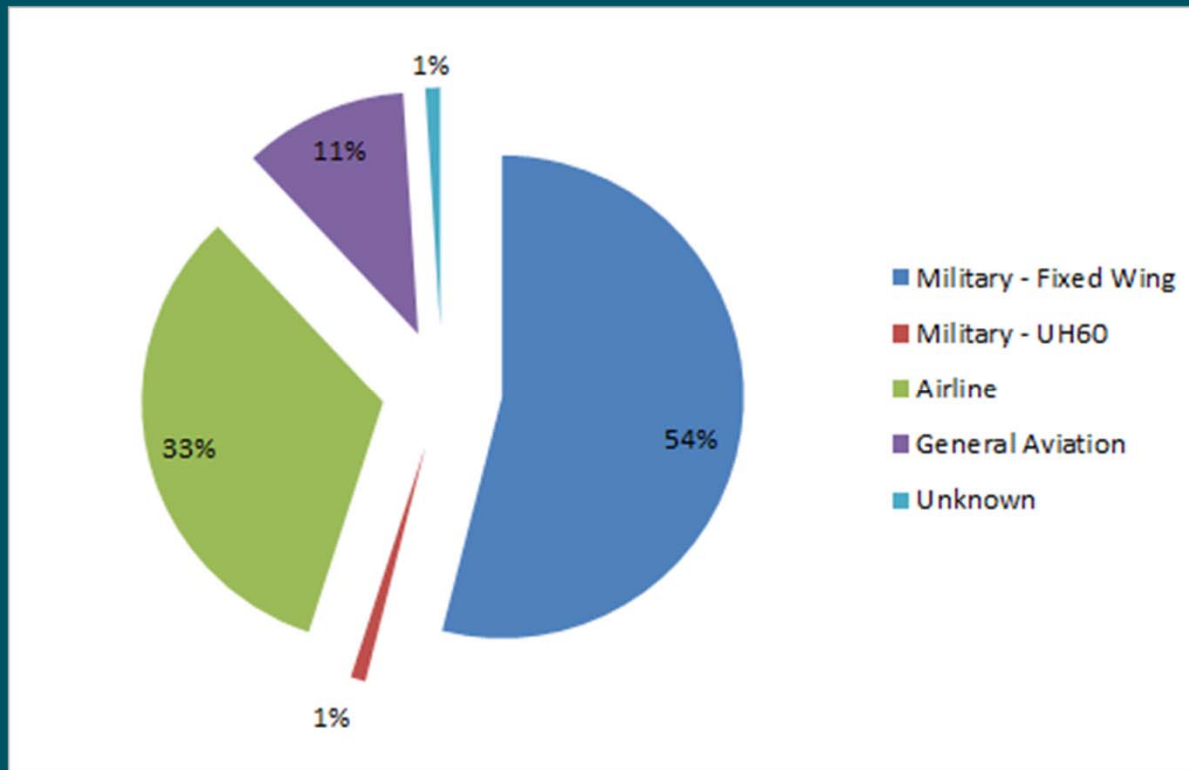
**AC aircraft have 60 or more seats**  
**AT aircraft have 59 seats or less**



# Complaints by Aircraft Type

OCT 15 – MAR 16

6



# Complaints by Area

OCT 15 – MAR 16

7

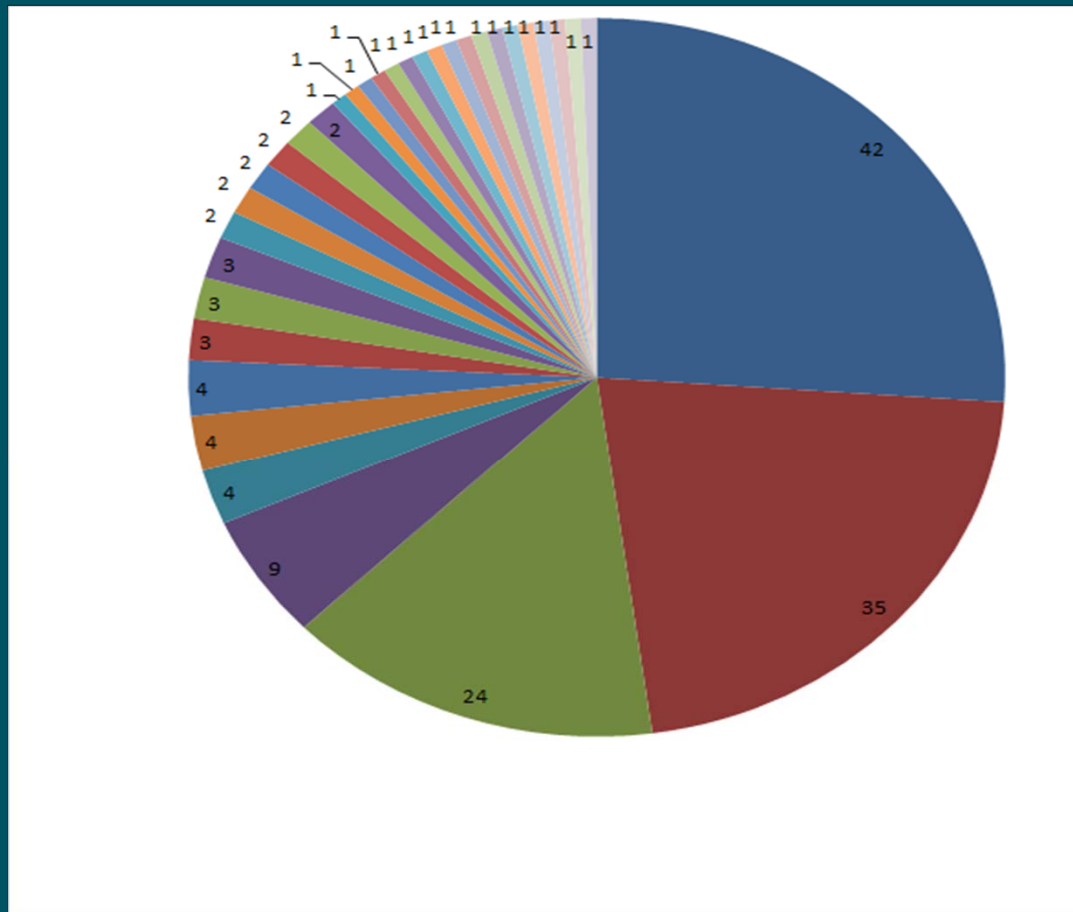
Area	OCT 15 - MAR 16		OCT 14 - MAR 15	
	Complaints	Callers	Complaints	Callers
<i>DeForest</i>	42	1	144	1
<i>Madison</i>	95	32	15	11
<i>Marshall</i>	0	0	2	1
<i>Sun Prairie</i>	24	1	2	2
<b>Total</b>	<b>161</b>	<b>34</b>	<b>163</b>	<b>15</b>



# Complaints per Household

OCT 15 – MAR 16

8





# REPEAT CALLERS

OCT 15 – MAR 16

9

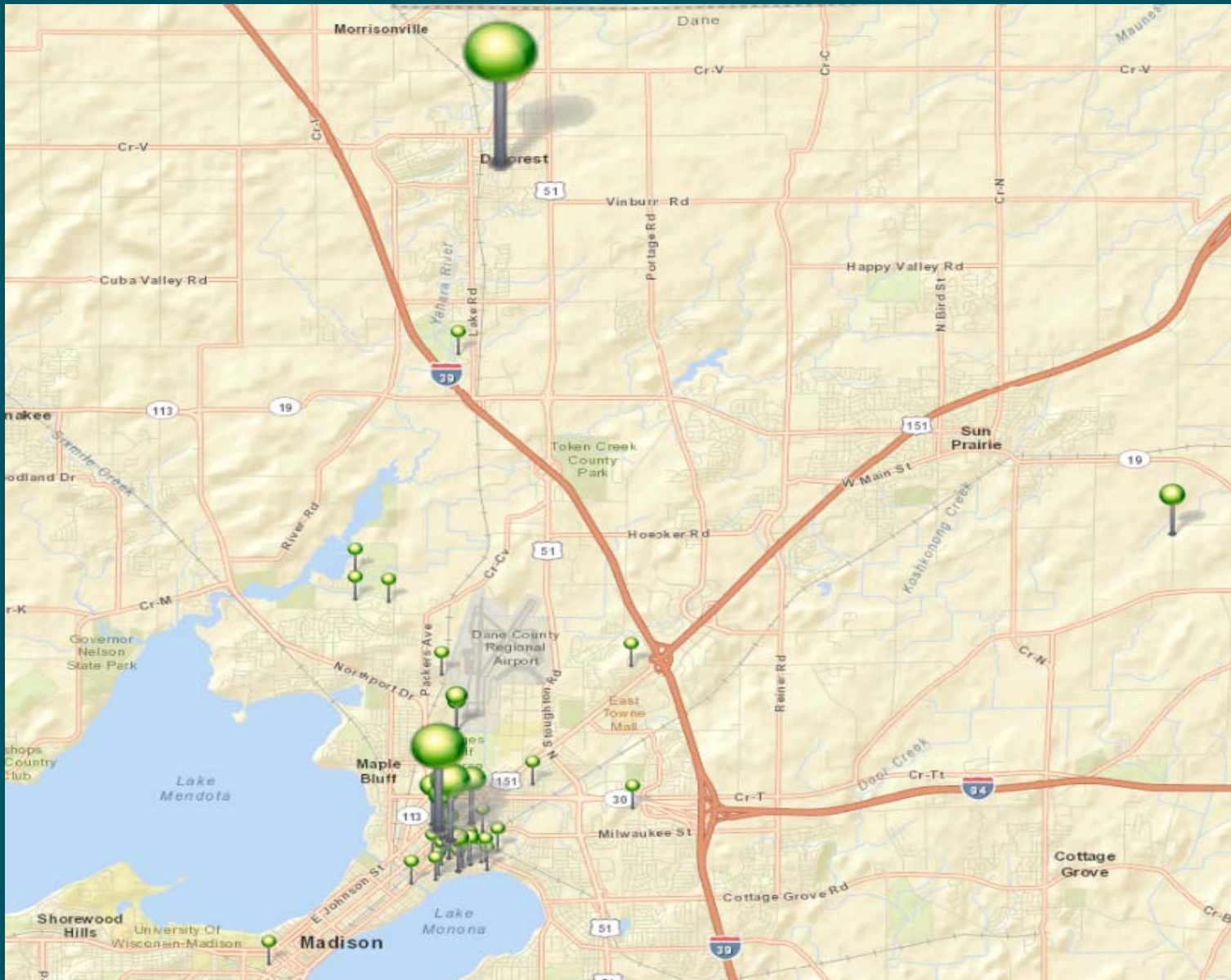
AREA	NUMBER OF CALLS
MADISON	95 (32 HOUSEHOLDS)
DEFOREST	42 (1 HOUSEHOLD)



# COMPLAINT LOCATIONS

OCT 15 – MAR 16

10



# NOISE COMPLAINT CALLS

OCT 15 – MAR 16

11

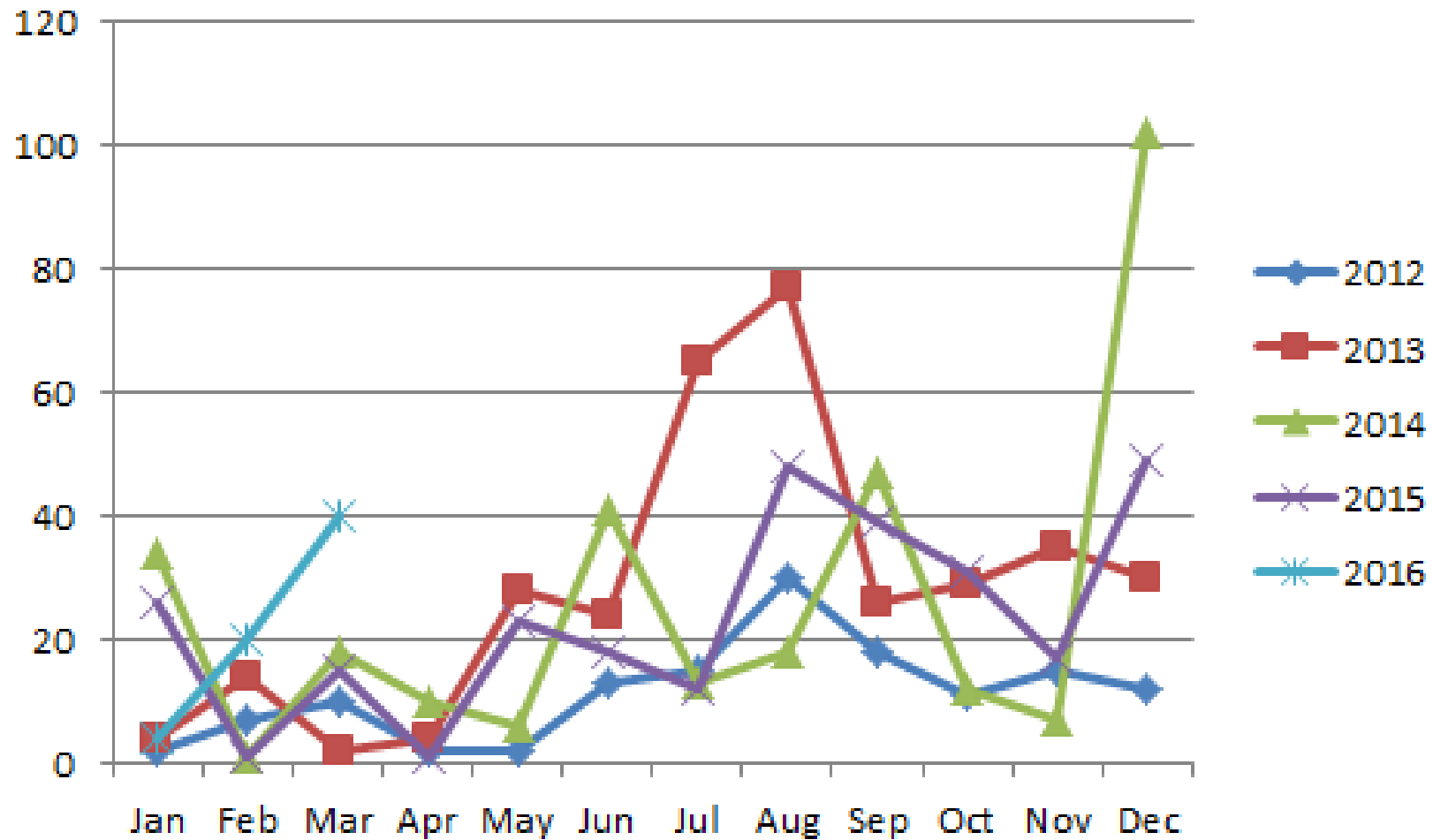
	OCT	NOV	DEC	JAN	FEB	MAR	TOTAL
DAY	30	17	40	3	13	31	134
NIGHT	1	0	9	1	7	9	27
TOTAL	31	17	49	4	20	40	161



# 2012 - 2016 Noise Complaint History

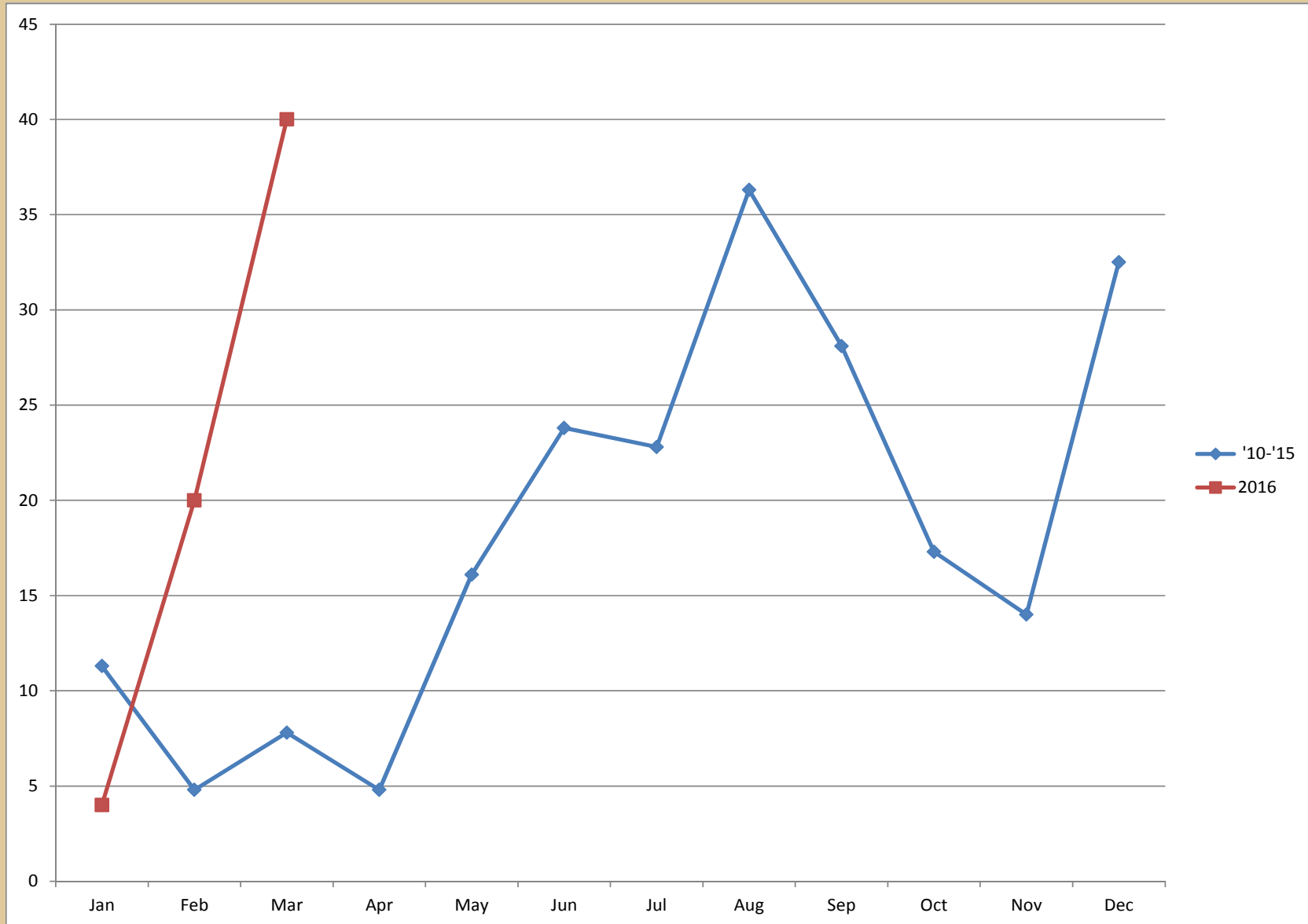
OCT 15 – MAR 16

12



# NOISE COMPLAINT HISTORY

OCT 15 – MAR 16 <sup>13</sup>



# COMPLAINT HISTORY

OCT 15 – MAR 16

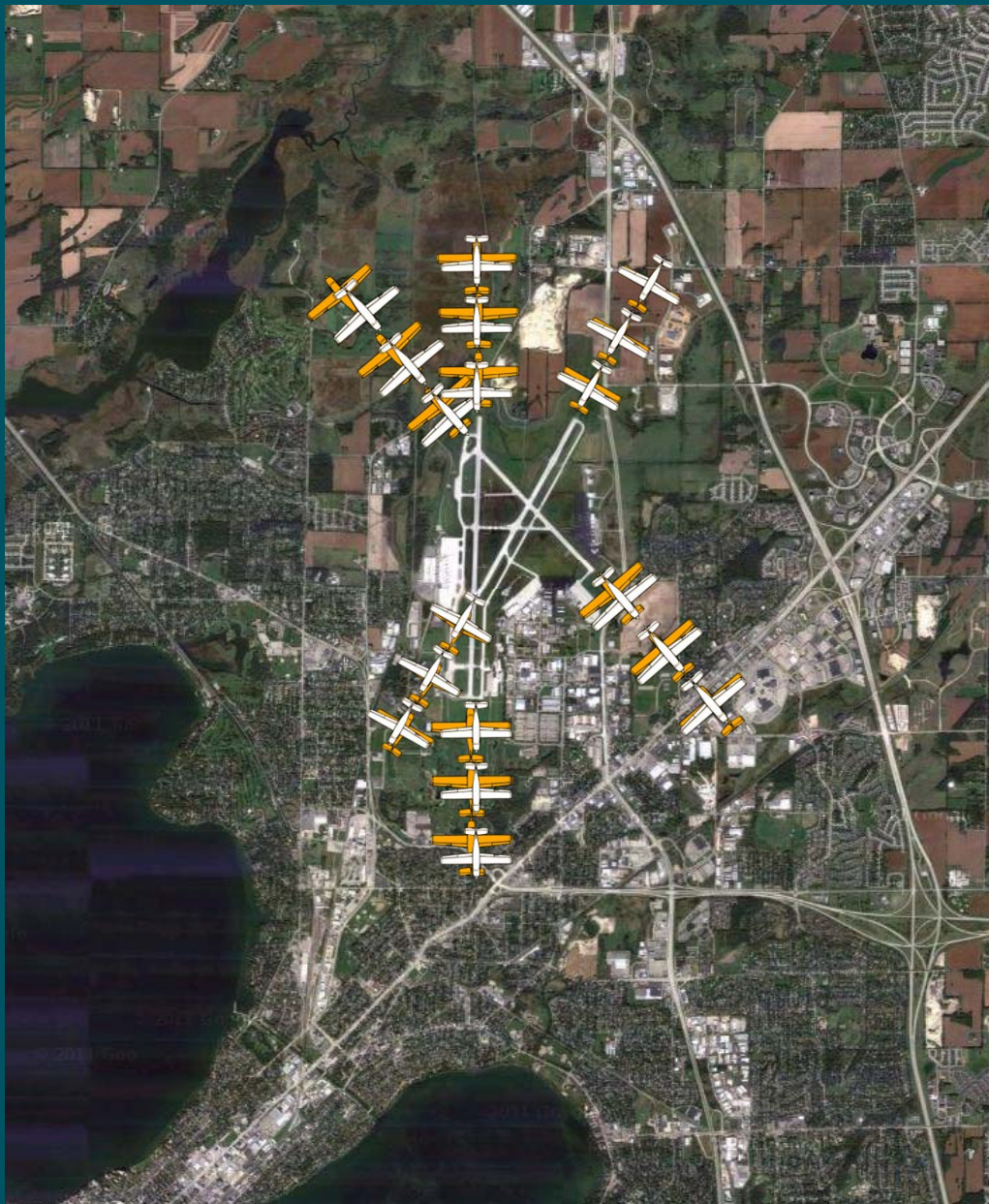
14

	1	2	3	4	5	6	7	8	9	10	11	12	13	14	15	16	17	18	19	20	21	22	23	24	25	26	27	28	29	30	31
OCT		M M M	U	MM MM MM M MA	M M M M	M M M	M M G	MM U			A A							A A													
NOV					M M M				G			G				MMM MMM MMM M	G	M													
DEC														MM MM MM MM MM	M M AA AA AA AA A	MMM MMA AAA AAA AAA AAA A	A A A A A A A		A												
JAN							A					M	M H																		
FEB								M	MM	HMM MMM MMM												G G	A G	G G	M	A					
MAR					M			MM MM MA AAA AAA A	MM MM MM AA	GGM			G G A	MM								A G	M								G M M

A = Airline; G = General Aviation; H = Military Helicopter; M = Military Fixed Wing; U = Unknown

# WIND CONDITIONS SUMMARY

15



- WINDS FROM THE SOUTH  
THAT ARE GREATER THAN 10 KNOTS
- VISIBILITY GREATER THAN 3 MILES
- RUNWAY CONDITION IS DRY
- PILOT COMPLIES WITH VOLUNTARY CONTRA FLOW OPERATION

# Wisconsin Wind Data\*

\*National Weather Service

16

Month	Prevailing Wind	Greater than 5 kts
Jan	WNW – 11.5	94.0%
Feb	WNW – 12	93.4%
Mar	NW – 13	93.9%
Apr	S – 11.4	93.6%
May	S – 10.4	93.0%
Jun	S – 9.7	91.6%
Jul	S – 9.2	90.1%
Aug	S – 9.1	88.9%
Sep	S – 9.8	90.1%
Oct	S – 10.4	92.2%
Nov	S – 10.7	94.3%
Dec	WNW – 12.4	94.0%
Annual	S – 12.4	92.4%





# NOISE ABATEMENT COMPLIANCE AUDIT

WEATHER / RUNWAY DATA	
WINDS AT 5 KNOTS OR HIGHER <sup>1</sup>	83.55%
VISIBILITY AT 5 STATUTE MILES OR LESS	10.29%
RUNWAYS CLOSED <sup>2</sup>	18/36 = 46:30 3/21 = 220:45 14/32 = 257:15
<sup>1</sup> – Based on METAR weather observations at the time of recorded aircraft operations. <sup>2</sup> – Runway closures primarily due to snow and ice control procedures	



# NOISE ABATEMENT COMPLIANCE AUDIT

## RUNWAY USE

Aircraft observed departing to the North	38.77%
Aircraft observed arriving from the North	47.86%
Aircraft observed departing to the South	60.12%
Aircraft observed arriving from the South	52.30%

## PASSUR FLIGHT TRACKING

**5,633** operations recorded by Passur flight monitoring system



# NOISE ABATEMENT COMPLIANCE AUDIT

**\*\* With 100% compliance of Noise Abatement Procedures, there are times aircraft are required depart to the south and arrive from the south. \*\***

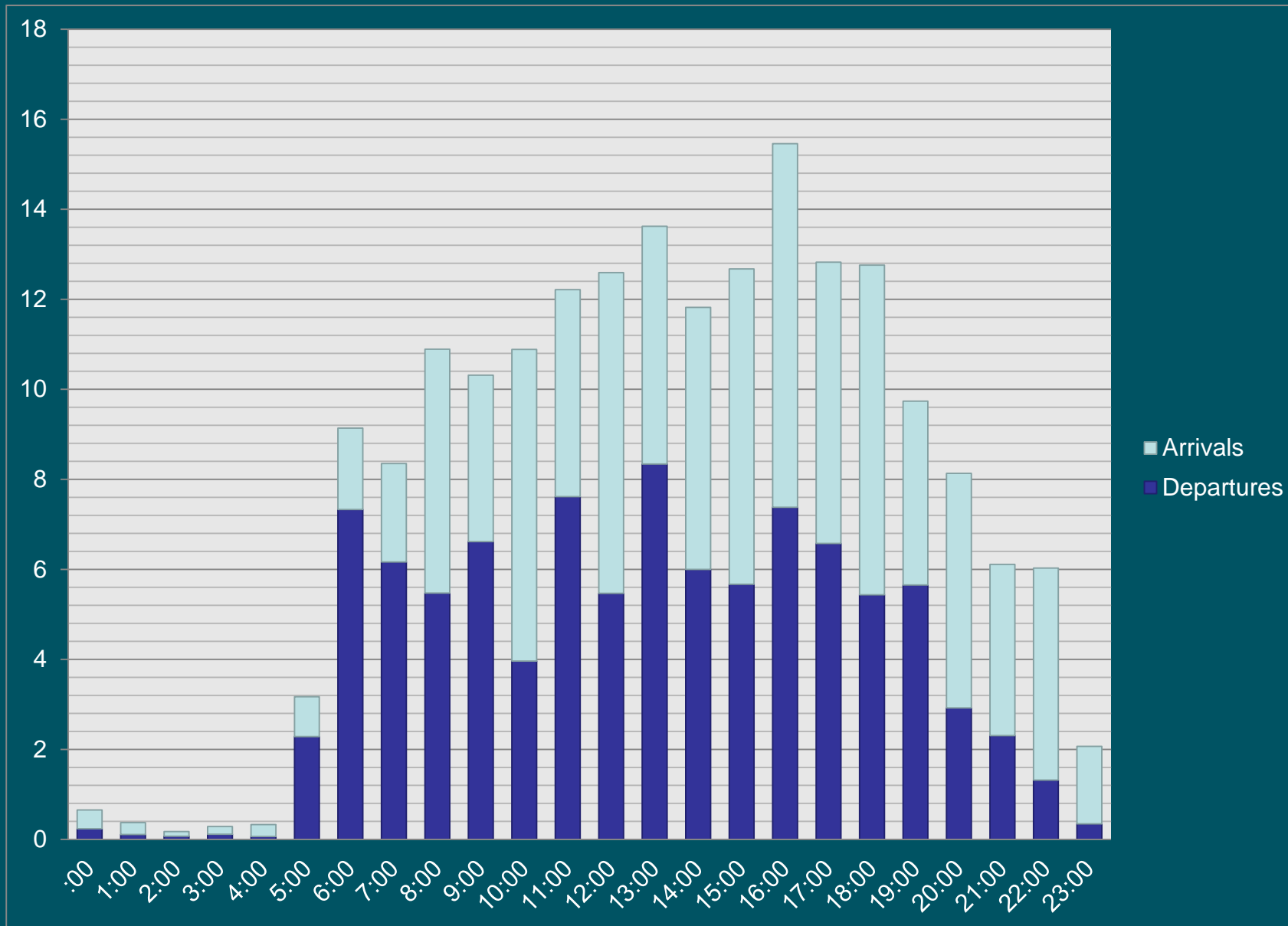
RUNWAY USE FACTORS			
	Wind	Visibility	Ceiling
South Departure	72.16%	13.86%	1.27%
South Arrival	72.01%	8.10%	28.83%

**\*\* Safety, traffic, airline requirements, and weather are all components which are factored into a pilot's decision when landing and taking off. \*\***



# AVERAGE HOURLY OPERATIONS

OCT 15 – MAR 16



# CONTACT INFORMATION

21

24 Hour Aircraft Noise Line: **246-5841**

Online Form: <http://www.msnaairport.com/community/noise.aspx>

Madison Automated Weather: **249-0615**



# Questions?

