

Noise Abatement Subcommittee Review of Noise Complaint Activity

APRIL 24, 2017

Madison, Wisconsin



AIRCRAFT MOVEMENTS

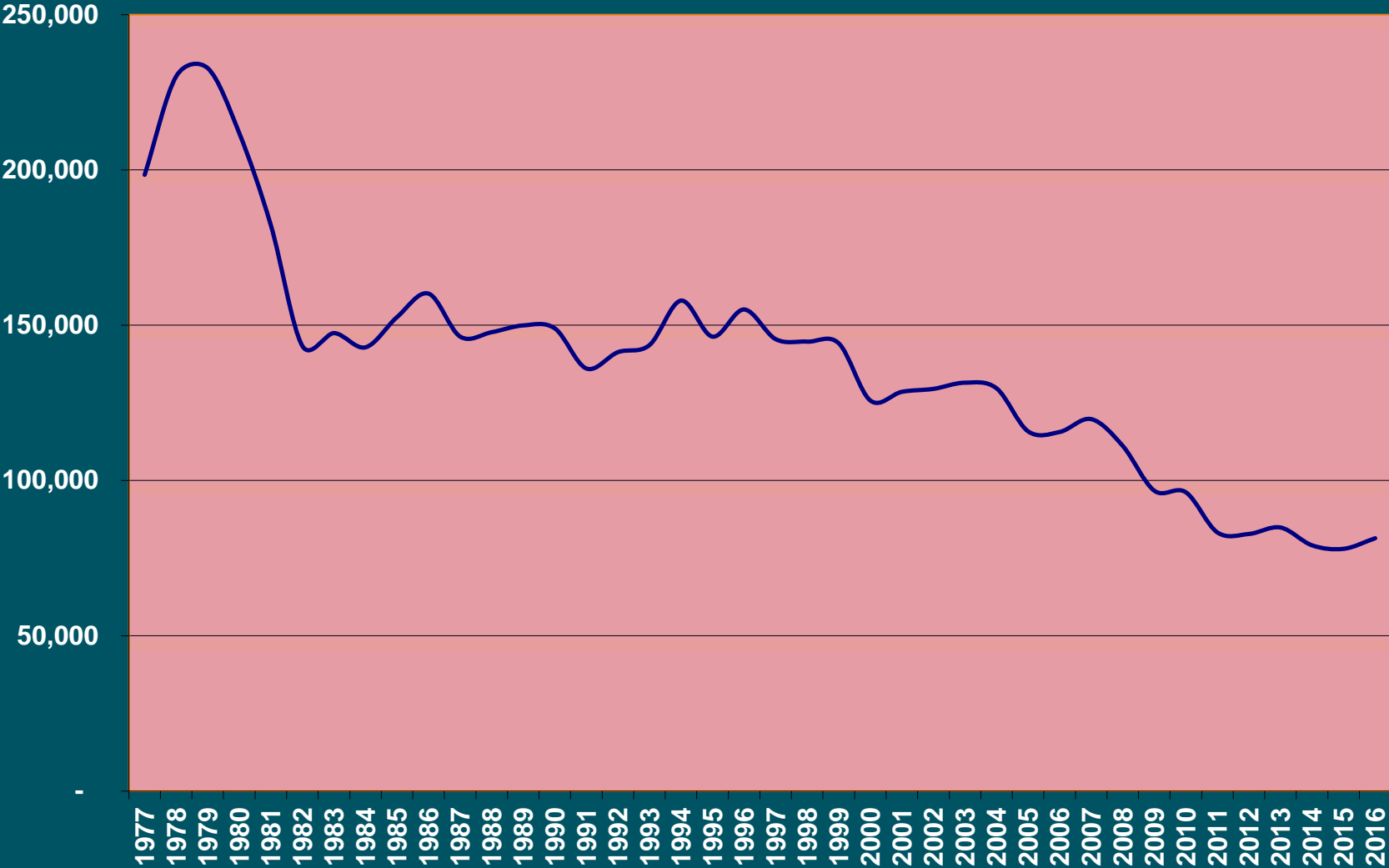
OCT 16 – MAR 17

Aircraft Movements	OCT 16 – MAR 17	OCT 15 – MAR 16	% Change
<i>Air Carrier</i>	12,935	14,176	- 9 %
<i>Military</i>	2,130	2,711	- 21 %
<i>General Aviation</i>	20,726	21,332	- 3%
<i>Total Movements</i>	36,412	38,216	- 4%

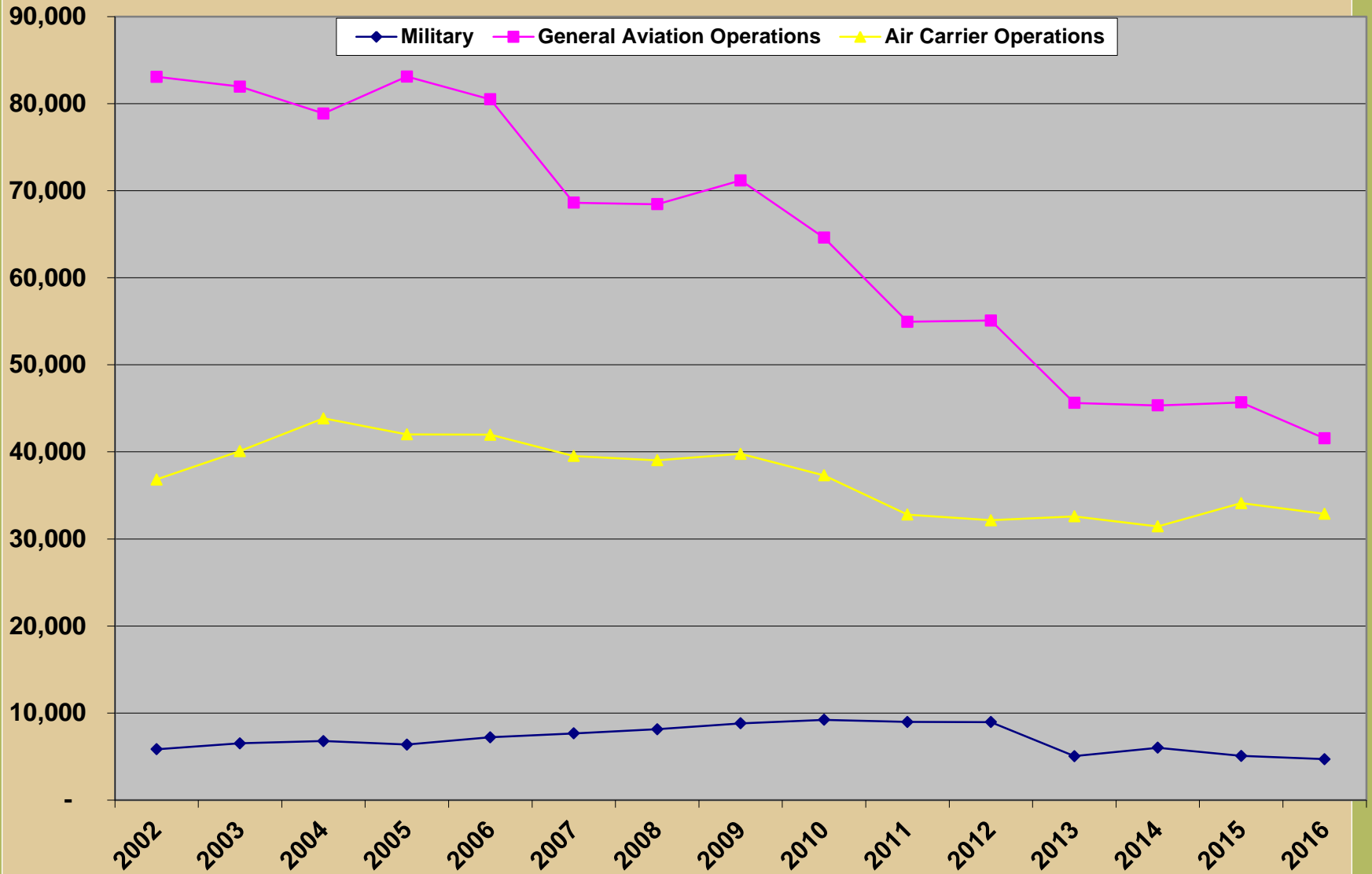


Aircraft Operations

Historical Total Aircraft Operations, DCRA

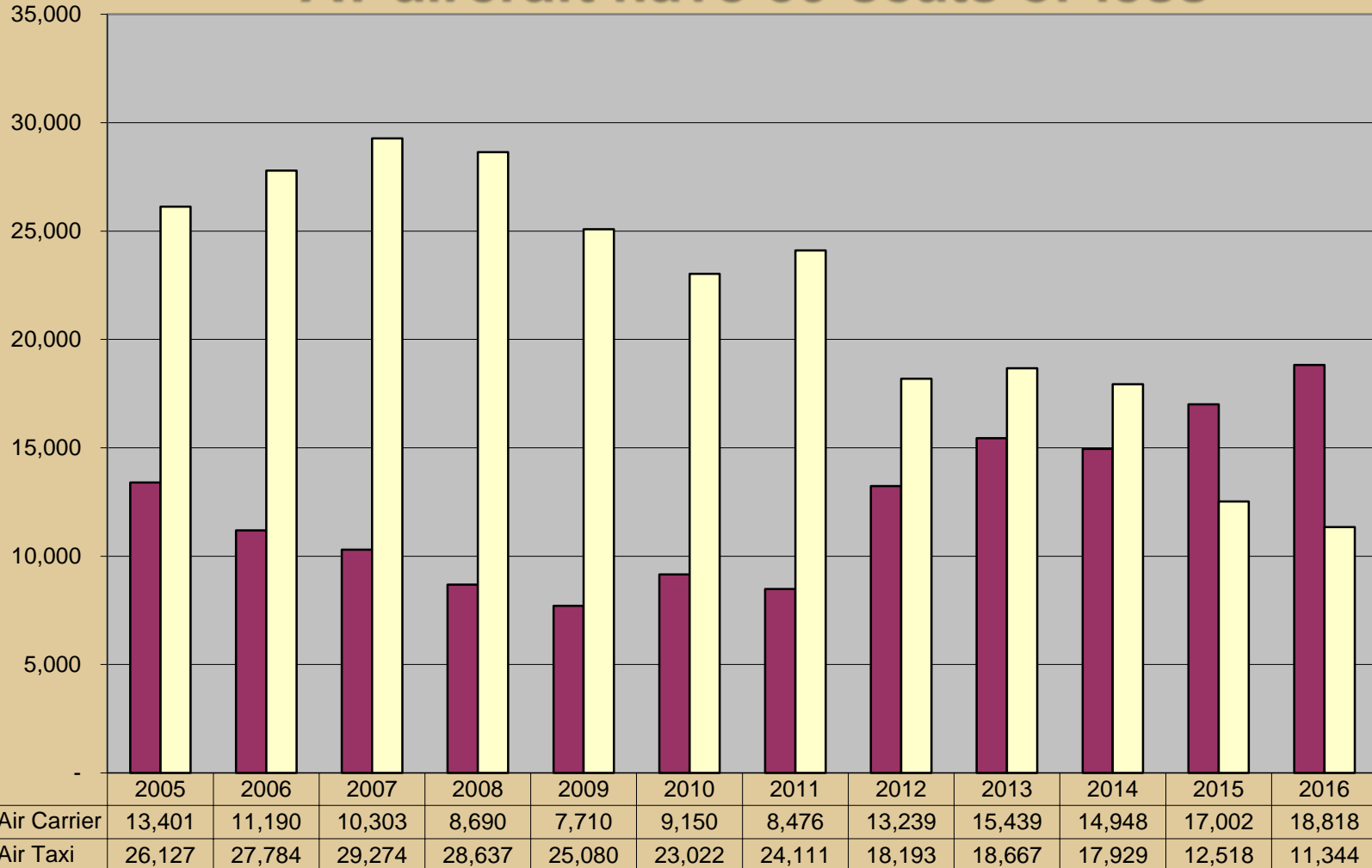


Historical Aircraft Operations by Type



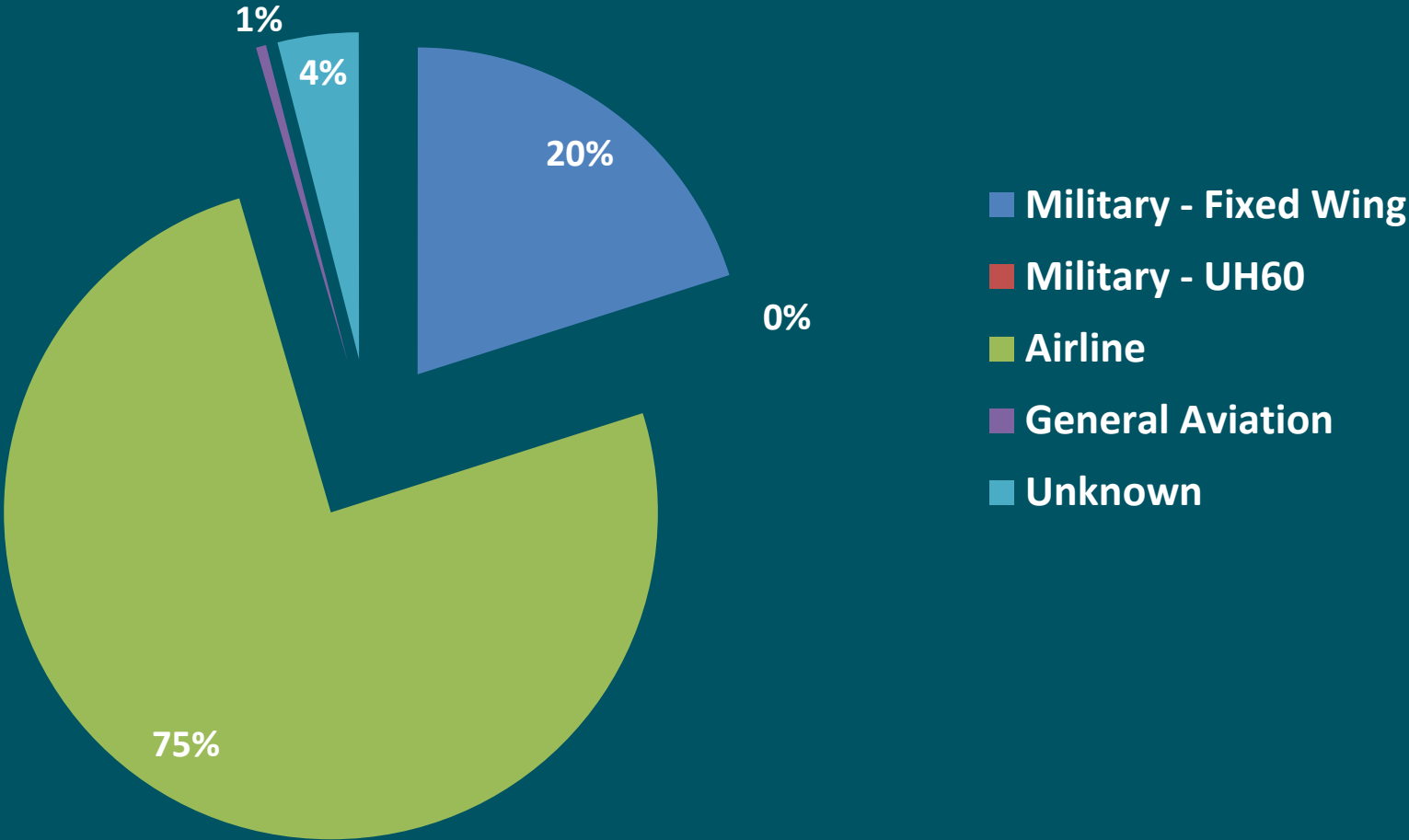
Air Carrier (A-320, B717) vs Air Taxi (CRJ, ERJ)

AC aircraft have 60 or more seats
AT aircraft have 59 seats or less



Complaints by Aircraft Type

OCT 16 – MAR 17



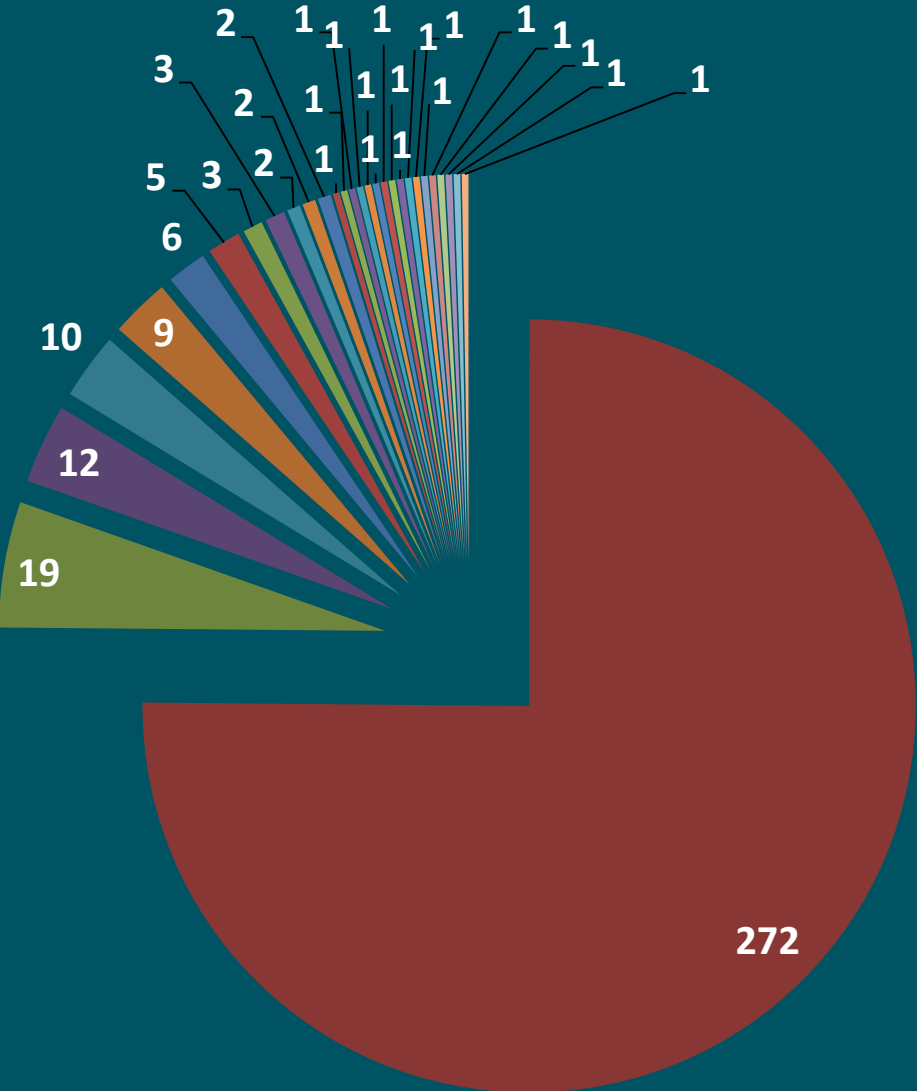
Complaints by Area

OCT 16 – MAR 17

Area	OCT 16 – MAR 17		OCT 15 – MAR 17	
	Complaints	Callers	Complaints	Callers
<i>Blooming Grove</i>	0	0	0	0
<i>Burke</i>	0	0	0	0
<i>Cottage Grove</i>	0	0	0	0
<i>DeForest</i>	272	1	42	1
<i>Fitchburg</i>	0	0	0	0
<i>Madison</i>	80	26	95	32
<i>McFarland</i>	0	0	0	0
<i>Middleton</i>	0	0	0	0
<i>Monona</i>	0	0	0	0
<i>Sun Prairie</i>	12	2	24	1
<i>Windsor</i>	0	0	0	0
<i>Verona</i>	0	0	0	0
<i>Waunakee</i>	0	0	0	0
Total	364	29	161	34

Complaints per Household

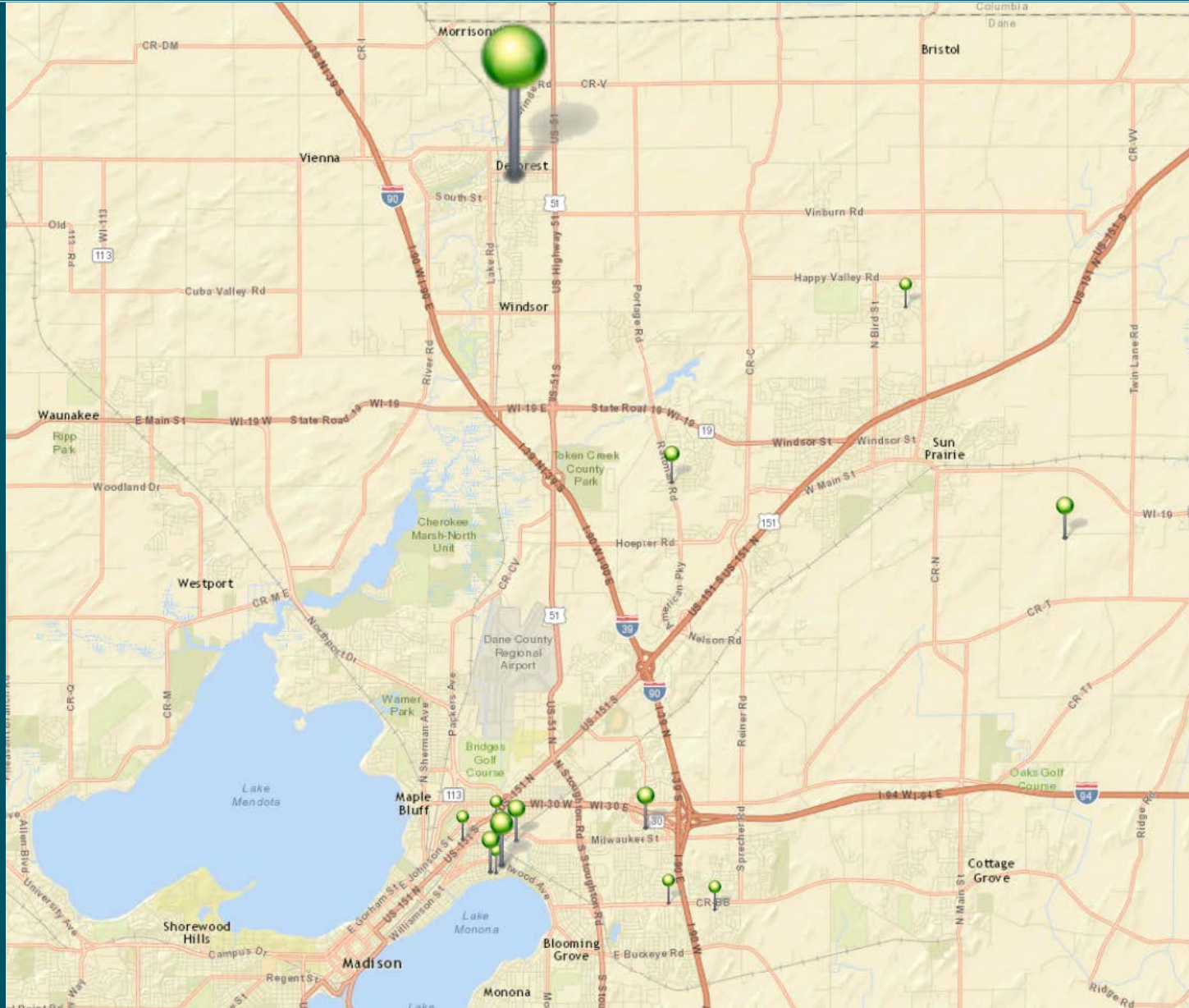
OCT 16 – MAR 17



COMPLAINT LOCATIONS

OCT 14 – MAR 15

10



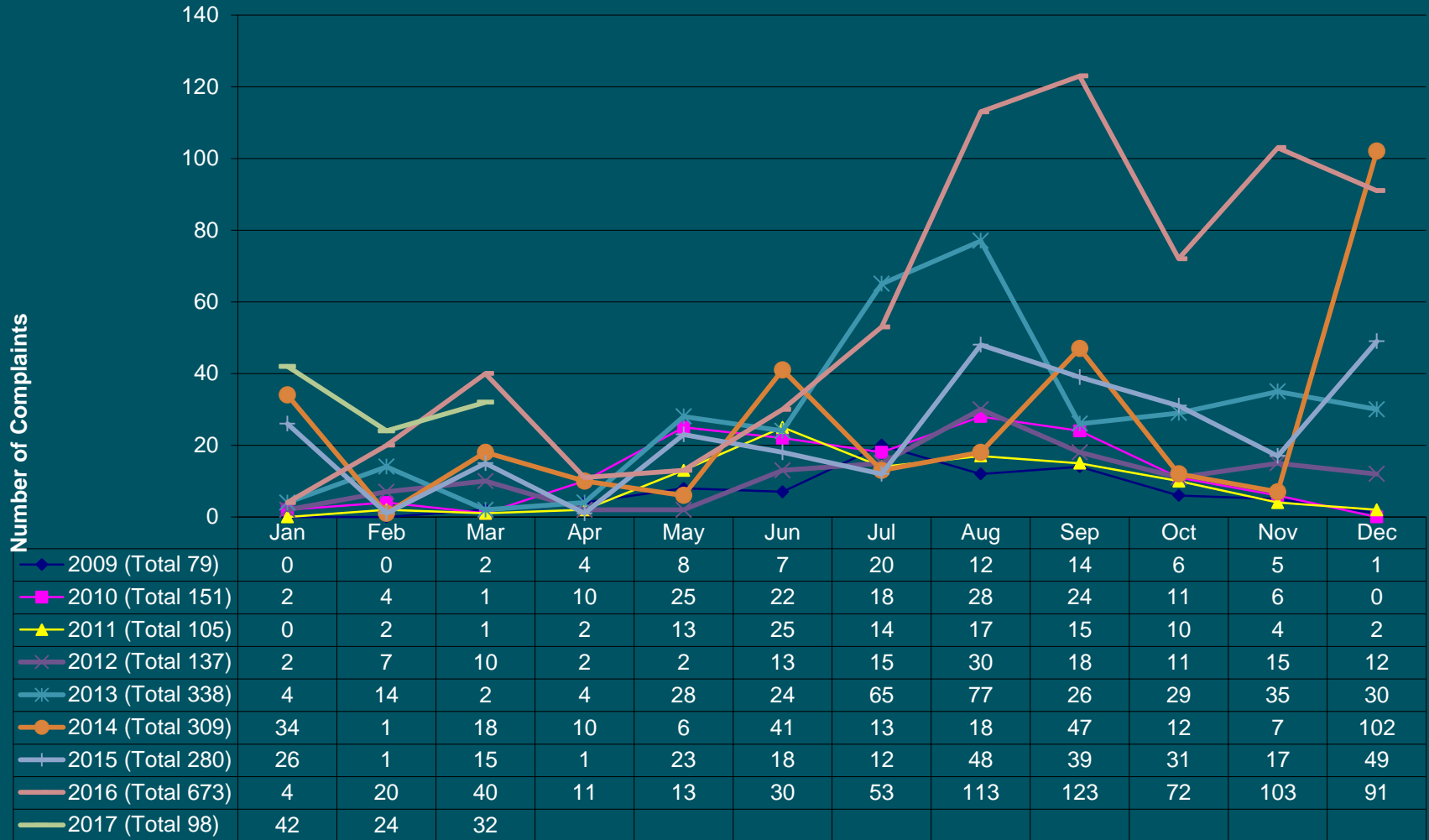
NOISE COMPLAINT CALLS

OCT 16 – MAR 17

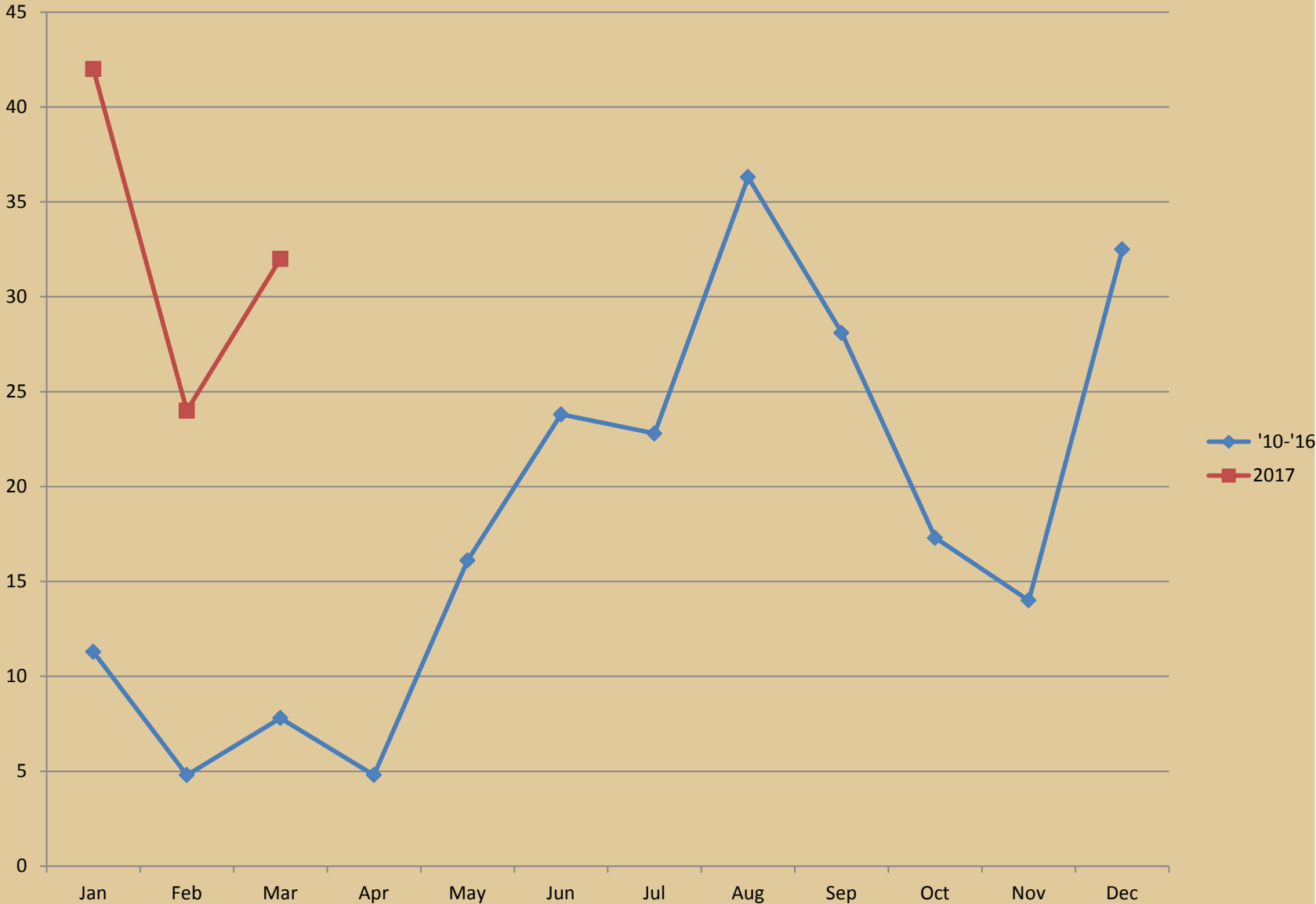
	OCT	NOV	DEC	JAN	FEB	MAR	TOTAL
DAY	68	102	91	39	16	27	343
NIGHT	4	1	0	3	8	5	21
TOTAL	72	103	91	42	24	32	364



2009 - 2017 Noise Complaint History



Noise Complaint History



	1	2	3	4	5	6	7	8	9	10	11	12	13	14	15	16	17	18	19	20	21	22	23	24	25	26	27	28	29	30	31
OCT			AAAAA	AAAAA	AAAA	AAAA	AAAA				UMM			AAAA	15		9	GAAAA					G	MC			AA	AA AA	U	AA	AA
NOV								AUU7M	AUU5M					MAAAAA	AA AA AA AA AA	MAA	AAAAA					AAAAA			AAAAA	42	AA		UA		
DEC				AAAAU	AAAAA	AAAAA						UM52	M10	MAAM					A		M						M	MM MM MM MM M			
JAN			M				AAA	A		M				UA			MAAA	MM MM MM 10	AA	AA			UA				MM MM	AAAAA	A		
FEB		A		U					AAA				M							AAAAA	U A A A A A	M U				MMM					
MAR	UG		MAA		MM							AAA									UMMM	M M				MM MM MM	MM			MM	



A = Airline; G = General Aviation; H = Military Helicopter; M = Military Fixed Wing; U = Unknown

Wisconsin Wind Data*

*National Weather Service

15

Month	Prevailing Wind	Greater than 5 kts
Jan	WNW – 11.5	94.0%
Feb	WNW – 12	93.4%
Mar	NW – 13	93.9%
Apr	S – 11.4	93.6%
May	S – 10.4	93.0%
Jun	S – 9.7	91.6%
Jul	S – 9.2	90.1%
Aug	S – 9.1	88.9%
Sep	S – 9.8	90.1%
Oct	S – 10.4	92.2%
Nov	S – 10.7	94.3%
Dec	WNW – 12.4	94.0%
Annual	S – 12.4	92.4%

NOISE ABATEMENT COMPLIANCE AUDIT

WEATHER / RUNWAY DATA	
WINDS AT 5 KNOTS OR HIGHER ¹	81.67%
VISIBILITY AT 5 STATUTE MILES OR LESS	11.23%
RUNWAYS CLOSED ²	18/36 = 44:30 3/21 = 272:45 14/32 = 288:15
¹ – Based on METAR weather observations at the time of recorded aircraft operations. ² – Runway closures primarily due to snow and ice control procedures	

NOISE ABATEMENT COMPLIANCE AUDIT

RUNWAY USE

Aircraft observed departing to the North	40.46%
Aircraft observed arriving from the North	41.33%
Aircraft observed departing to the South	58.77%
Aircraft observed arriving from the South	56.60%

PASSUR FLIGHT TRACKING

13,936 operations recorded by Passur flight monitoring system

18 operations non-compliant with Noise Abatement Program

NOISE ABATEMENT COMPLIANCE AUDIT

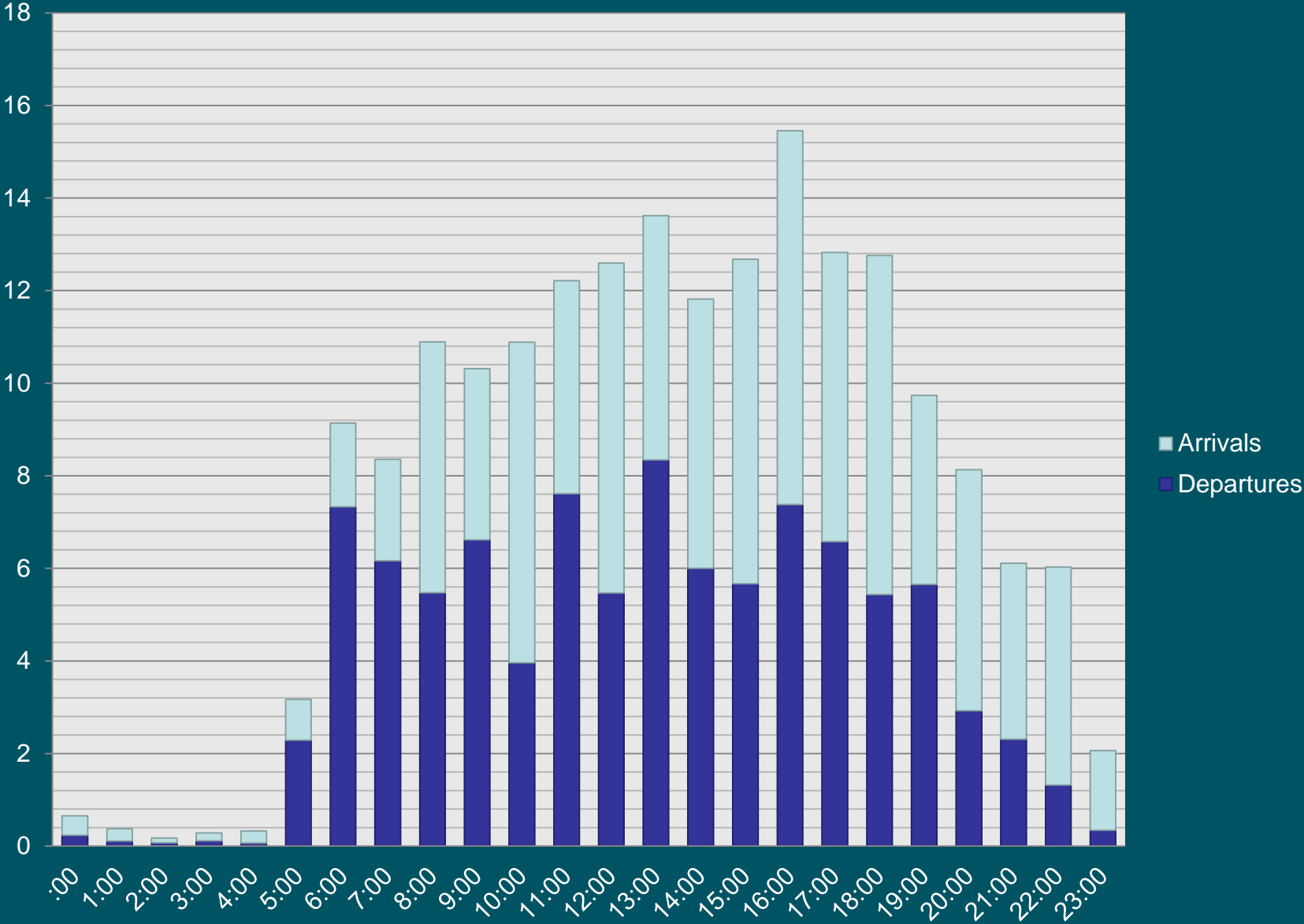
**** With 100% compliance of Noise Abatement Procedures, there are times aircraft are required depart to the south and arrive from the south. ****

RUNWAY USE FACTORS			
	Wind	Visibility	Ceiling
South Departure	73.46%	15.91%	0.47%
South Arrival	71.61%	7.73%	31.80%

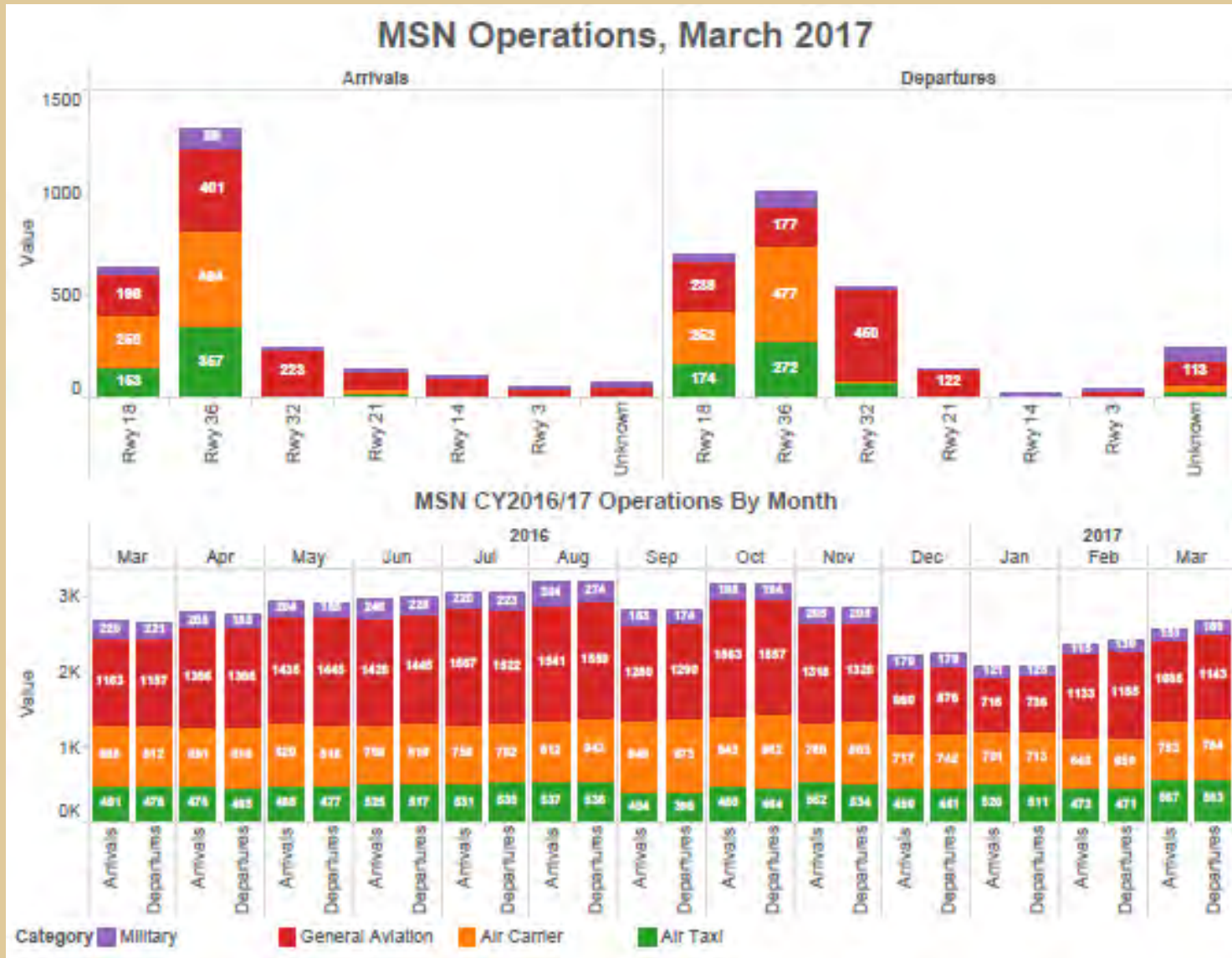
**** Safety, traffic, airline requirements, and weather are all components which are factored into a pilot's decision when landing and taking off. ****

AVERAGE A/C HOURLY OPERATIONS

OCT 16 – MAR 17



Runway Usage



CONTACT INFORMATION

24 Hour Aircraft Noise Line: **246-5841**

Online Form: <http://www.msnaairport.com/community/noise.aspx>

Madison Automated Weather: **249-0615**